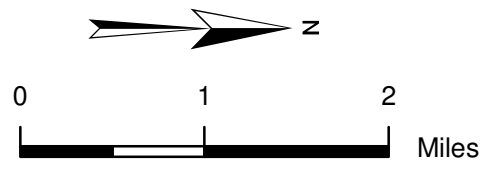


Corridors for Alignment Analysis	
Corridor	Corridor Segments
Centralia Sandoval D	T2-C59-T6-T7-T8-S38-S39-T9-T10-T11
Centralia-Sandoval DJ	C43-C63-C48-C65-C67-C57-C60-S46-S47-S48-S49-T10-T11
Centralia-Sandoval DL	C43-C63-C48-C65-C67-C57-S45-S38-S39-T9-T10-T11
-	-
-	-

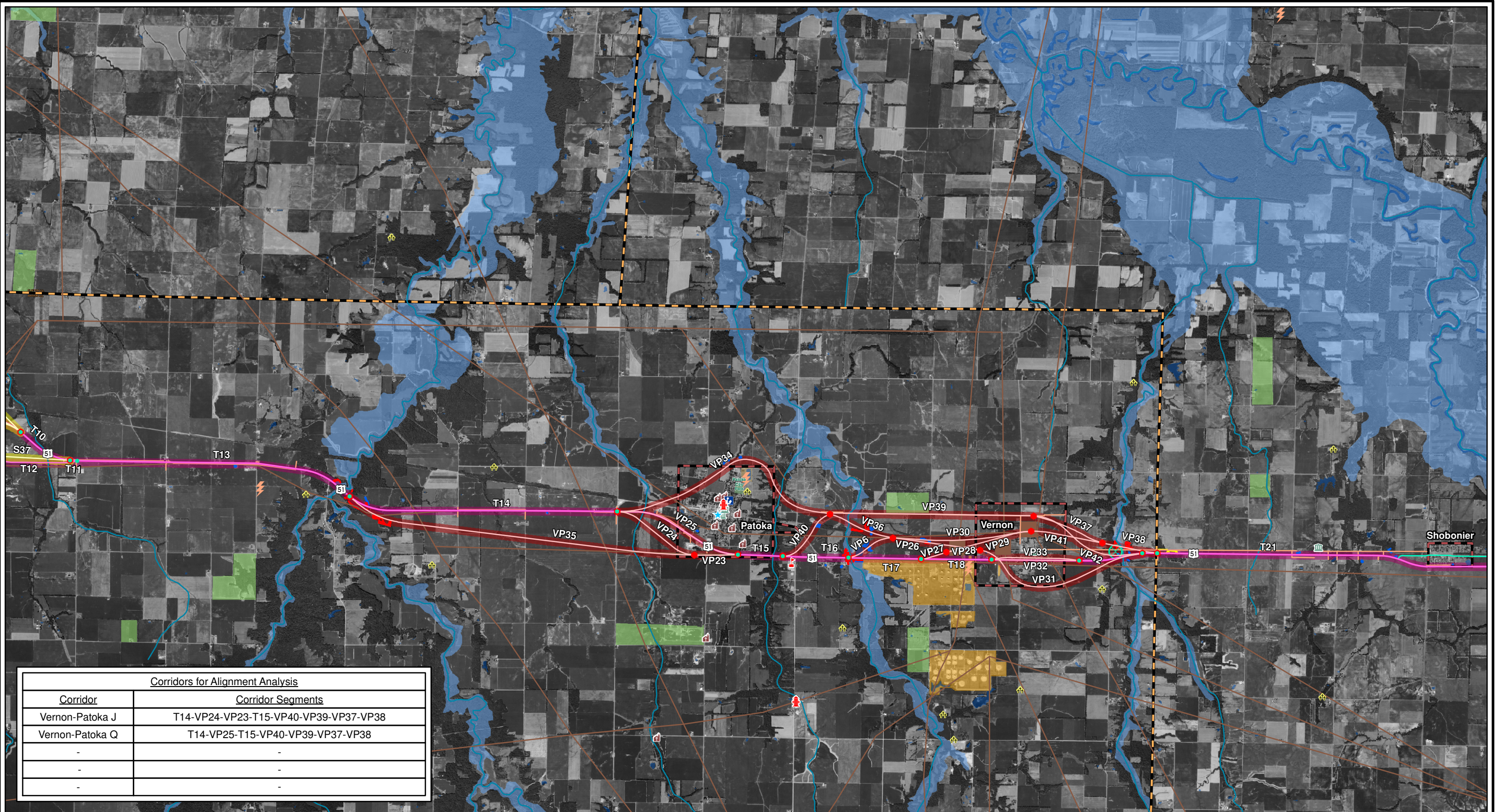


Macro Analysis Alternatives

Sheet 1 of 4



- Legend**
- Tangent Segment Division (Red dot)
 - Alternative Segment Division (Red circle)
 - Existing U.S. Route 51 (Pink line)
 - Old U.S. Route 51 (Light blue line)
 - Municipal Boundary (Dashed black line)
 - County Boundary (Dashed orange line)
 - C-Series Corridor (Blue line)
 - R-Series Corridor (Yellow line)
 - S-Series Corridor (Green line)
 - V-Series Corridor (Orange line)
 - VP-Series Corridor (Red line)
 - Tangent Corridor (Purple line)
 - Lake (Blue area)
 - Drinking Water (Light blue area)
 - Floodway (Light blue area)
 - Floodplain (Light blue area)
 - INHS Wetland (Blue hatched area)
 - INHS High Quality Wetland (Red hatched area)
 - Potential Wetland Area (Light blue hatched area)
 - Threatened & Endangered Species (Yellow hatched area)
 - Important Habitat Area (Yellow hatched area)
 - Park (Green area)
 - State Park (Yellow-green area)
 - Centennial Farm (Light green area)
 - Sesquicentennial Farm (Light green area)
 - High Quality Woodland (Light green area)
 - INAI Site (Light green area)
 - Stream (Blue line)
 - Biologically Significant Stream (Blue line)
 - Electrical Transmission Line (Orange line)
 - Pipeline (Orange line)
 - Electrical Facility (Orange line)
 - Antenna Structure (Orange line)
 - Pipeline Facility (Orange line)
 - Tank Farm (Orange line)
 - Waste Water Treatment Plant (Orange line)
 - CERCLIS Site (Orange line)
 - Museum (Purple building icon)
 - Police Station (Blue star icon)
 - Fire Station (Red building icon)
 - Civic Building (Red building icon)
 - Hospital (Blue building icon)
 - Prison (Blue building icon)
 - Community Center (Yellow building icon)
 - Library (Blue building icon)
 - School (Red building icon)
 - Church (Red building icon)
 - Historic Site (Red building icon)
 - Cemetery (Yellow building icon)
 - Rare Plant Population (Green circle icon)

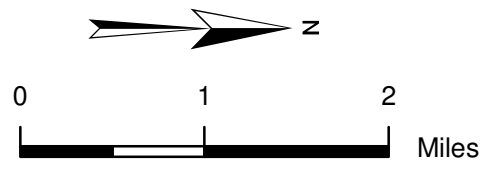


Corridors for Alignment Analysis	
Corridor	Corridor Segments
Vernon-Patoka J	T14-VP24-VP23-T15-VP40-VP39-VP37-VP38
Vernon-Patoka Q	T14-VP25-T15-VP40-VP39-VP37-VP38
-	-
-	-

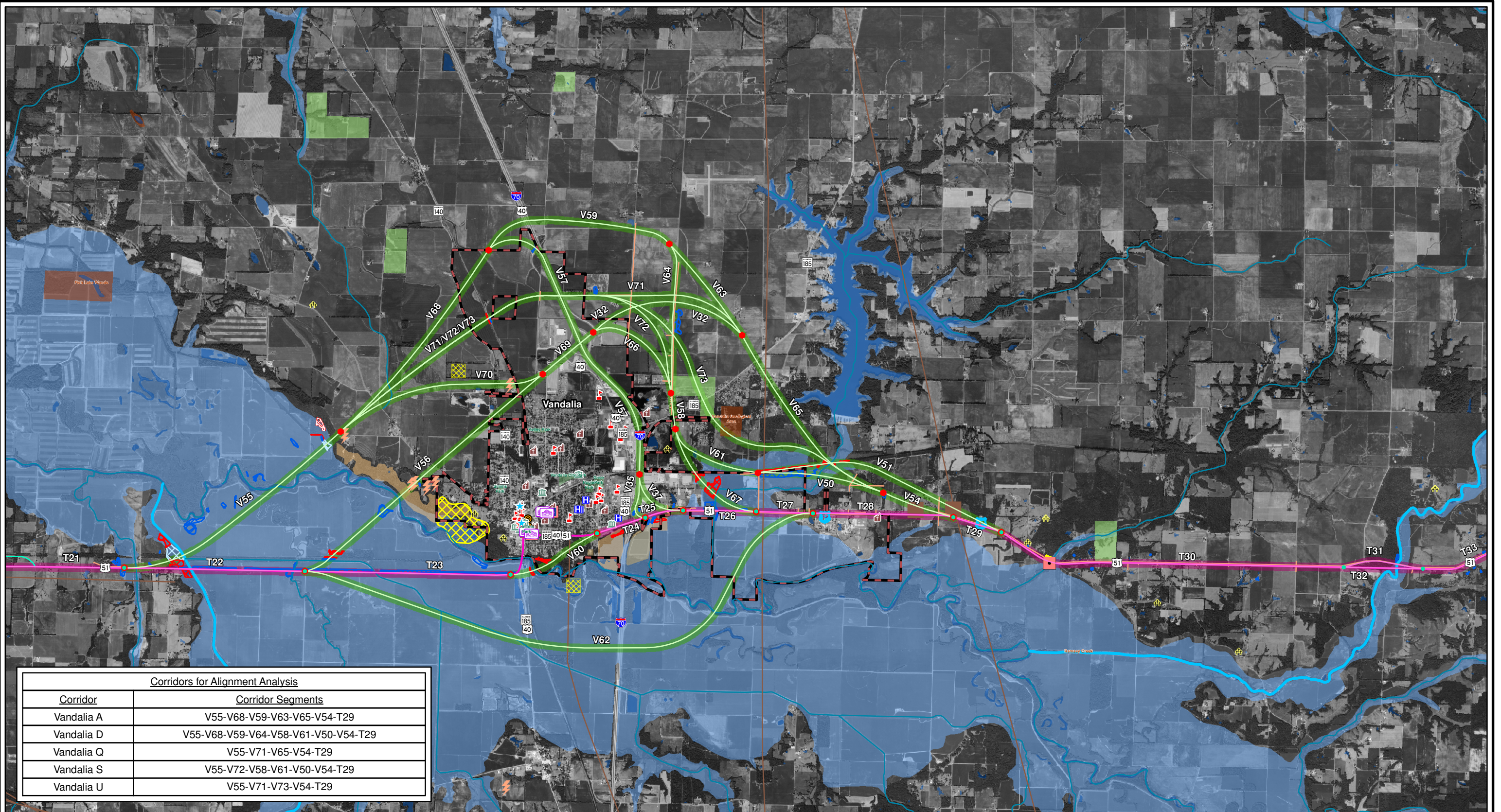


Macro Analysis Alternatives

Sheet 2 of 4



Legend	<ul style="list-style-type: none"> Tangent Segment Division Alternative Segment Division Existing U.S. Route 51 Old U.S. Route 51 Municipal Boundary County Boundary 	<ul style="list-style-type: none"> C-Series Corridor R-Series Corridor S-Series Corridor V-Series Corridor VP-Series Corridor Tangent Corridor 	<ul style="list-style-type: none"> Lake Drinking Water Floodway Floodplain INHS Wetland INHS High Quality Wetland Potential Wetland Area Threatened & Endangered Species Important Habitat Area 	<ul style="list-style-type: none"> Park State Park Centennial Farm Sesquicentennial Farm High Quality Woodland INAI Site Stream Biologically Significant Stream 	<ul style="list-style-type: none"> Electrical Transmission Line Pipeline Electrical Facility Antenna Structure Pipeline Facility Tank Farm Waste Water Treatment Plant CERCLIS Site 	<ul style="list-style-type: none"> Museum Police Station Fire Station Civic Building Hospital Prison Community Center Library 	<ul style="list-style-type: none"> School Church Historic Site Cemetery Rare Plant Population
---------------	--	--	--	---	---	---	--

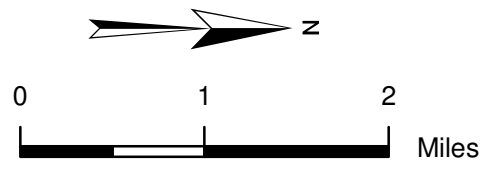


Corridors for Alignment Analysis	
Corridor	Corridor Segments
Vandalia A	V55-V68-V59-V63-V65-V54-T29
Vandalia D	V55-V68-V59-V64-V58-V61-V50-V54-T29
Vandalia Q	V55-V71-V65-V54-T29
Vandalia S	V55-V72-V58-V61-V50-V54-T29
Vandalia U	V55-V71-V73-V54-T29

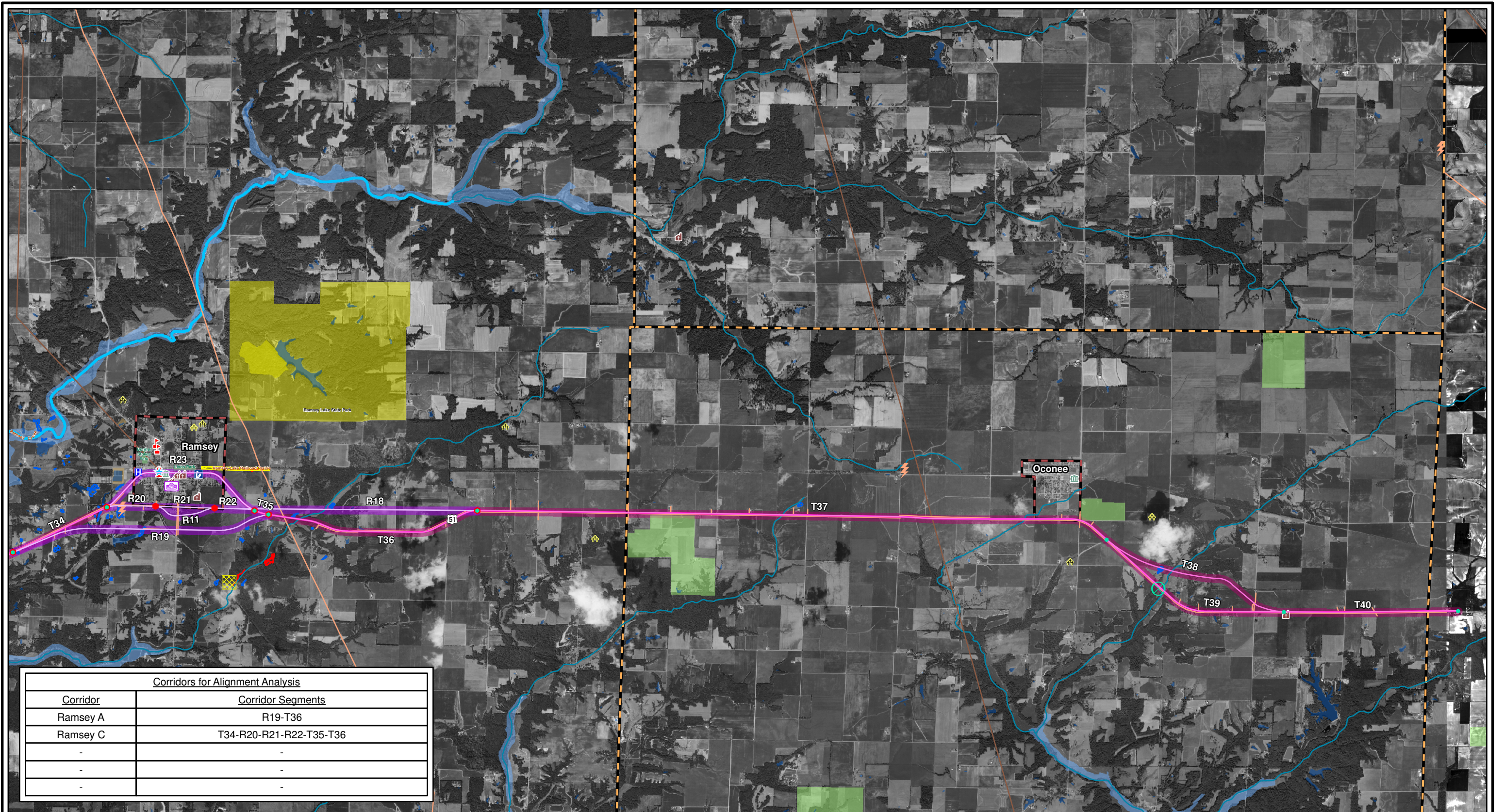


Macro Analysis Alternatives

Sheet 3 of 4



<ul style="list-style-type: none"> Legend Tangent Segment Division Alternative Segment Division Existing U.S. Route 51 Old U.S. Route 51 Municipal Boundary County Boundary 	<ul style="list-style-type: none"> C-Series Corridor R-Series Corridor S-Series Corridor V-Series Corridor VP-Series Corridor Tangent Corridor 	<ul style="list-style-type: none"> Lake Drinking Water Floodway Floodplain INHS Wetland INHS High Quality Wetland Potential Wetland Area Threatened & Endangered Species Important Habitat Area 	<ul style="list-style-type: none"> Park State Park Centennial Farm Sesquicentennial Farm High Quality Woodland INAI Site Stream Biologically Significant Stream 	<ul style="list-style-type: none"> Electrical Transmission Line Pipeline Electrical Facility Antenna Structure Pipeline Facility Tank Farm Waste Water Treatment Plant CERCLIS Site 	<ul style="list-style-type: none"> Museum Police Station Fire Station Civic Building Hospital Prison Community Center Library 	<ul style="list-style-type: none"> School Church Historic Site Cemetery Rare Plant Population
--	--	--	---	---	---	--

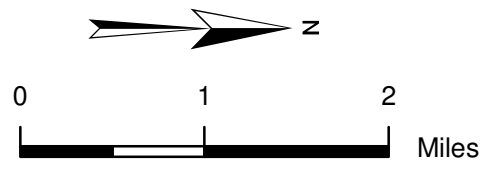


Corridors for Alignment Analysis	
Corridor	Corridor Segments
Ramsey A	R19-T36
Ramsey C	T34-R20-R21-R22-T35-T36
-	-
-	-
-	-



Macro Analysis Alternatives

Sheet 4 of 4



Legend	● Tangent Segment Division	● Alternative Segment Division	● Existing U.S. Route 51	● Old U.S. Route 51	▭ Municipal Boundary	▭ County Boundary	■ C-Series Corridor	■ R-Series Corridor	■ S-Series Corridor	■ V-Series Corridor	■ VP-Series Corridor	■ Tangent Corridor	■ Lake	■ Drinking Water	■ Floodway	■ Floodplain	■ INHS Wetland	■ INHS High Quality Wetland	■ Potential Wetland Area	■ Threatened & Endangered Species	■ Important Habitat Area	■ Park	■ State Park	■ Centennial Farm	■ Sesquicentennial Farm	■ High Quality Woodland	■ INAI Site	■ Stream	■ Biologically Significant Stream	— Electrical Transmission Line	— Pipeline	— Electrical Facility	⚡ Antenna Structure	— Pipeline Facility	— Tank Farm	— Waste Water Treatment Plant	— CERCLIS Site	🏛️ Museum	👮 Police Station	🚒 Fire Station	🏛️ Civic Building	🏥 Hospital	🏠 Prison	🏘️ Community Center	📖 Library	🎓 School	⛪ Church	🏠 Historic Site	⚰ Cemetery	🌿 Rare Plant Population
---------------	----------------------------	--------------------------------	--------------------------	---------------------	----------------------	-------------------	---------------------	---------------------	---------------------	---------------------	----------------------	--------------------	--------	------------------	------------	--------------	----------------	-----------------------------	--------------------------	-----------------------------------	--------------------------	--------	--------------	-------------------	-------------------------	-------------------------	-------------	----------	-----------------------------------	--------------------------------	------------	-----------------------	---------------------	---------------------	-------------	-------------------------------	----------------	-----------	------------------	----------------	-------------------	------------	----------	---------------------	-----------	----------	----------	-----------------	------------	-------------------------