

CENTRALIA Citizens Advisory Group # 3
July 17, 2008
Problem Statement

The US 51 highway does not provide an easy connection between local communities or a means of efficient travel.

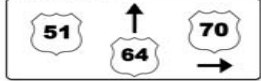
The US 51 highway hinders the movement of travelers, goods, and services, commerce north of Centralia and limits future tourism, residential, and industrial expansion.

The US 51 highway is unsafe for cars, trucks, bikes, pedestrians and farm equipment to be on the road at the same time.

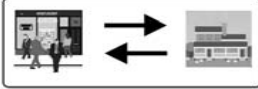
Maintain Access to Homes and Businesses



Improve Access to East/West and North/South State Routes



Improve Connectivity for Commuters



Improve Connections to Transportation Centers



Improve Access for Tourists



Provide Efficient Connections Between Communities



Improve Connectivity for Commuters



Improve Connections to Transportation Centers



Improve Access for Tourists



Provide Efficient Connections Between Communities



Improve Access to Airport



Improve Access to Commercial Centers



Improve Access to Industrial Centers



Promote Economic Development



Promote Tourism



Maintain Access to Downtown Business



Maintain Quality of Life



Improve Safety



Maintain Quality of Life



Improve Safety



Address Mobility for Users



Address Pedestrian/Bicycle Traffic



Maintain Access for Farm Equipment



Maintain Access to Public Use Facilities



Other Important Community Characteristics

Provide Connections for Future Bikeways

