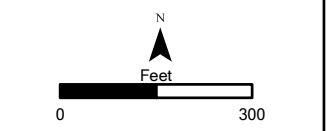
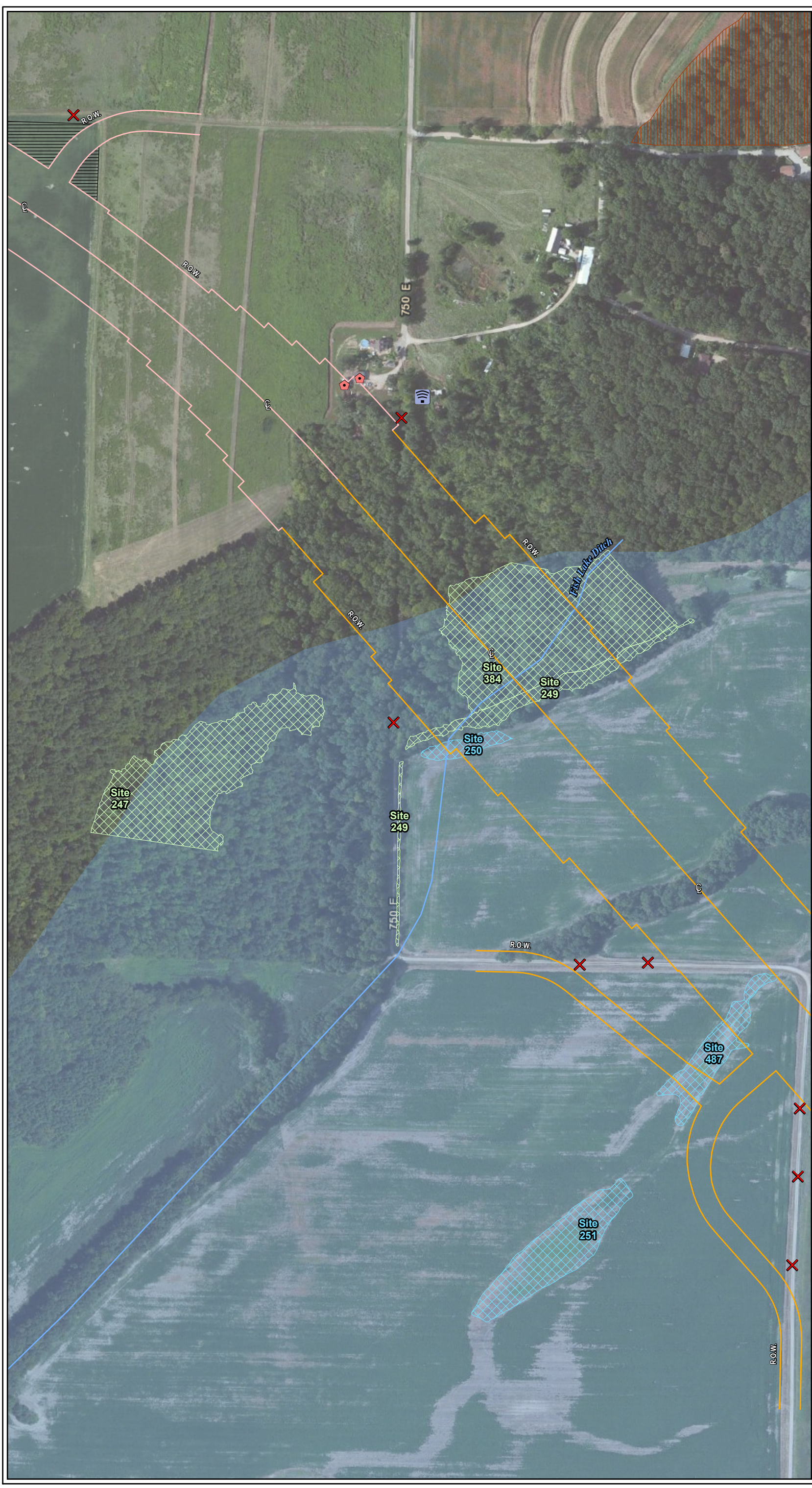


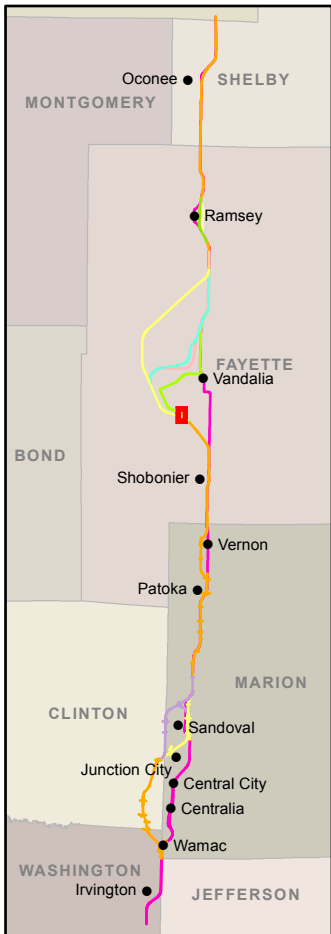
- Legend**
- Existing U.S. 51
 - U.S. 51 Build Alternative
 - CS Alt 1
 - CS Alt 2
 - V Alt 1
 - V Alt 2
 - V Alt 3
 - V Alt 4
 - Ramsey Creek Option A
 - Ramsey Creek Option B
 - R Alt 1
 - R Alt 2
 - Ⓢ Alternative Centerline
 - Alternative Right-of-Way
 - Biologically Significant Stream
 - Stream
 - Centennial Farm
 - Sesquicentennial Farm
 - State Park
 - INHS High Quality Wetland
 - INHS Wetland
 - INAI Site
 - Uneconomic Remnant
 - Important Use Area
 - REC Site
 - Floodplain
 - County Boundary
 - Municipality Boundary
 - Grade Separation
 - Ⓢ Noise Receptor
 - Ⓢ Monitored Noise Receptor
 - Ⓢ Quarry
 - Ⓢ CERCLIS Site
 - Ⓢ National Register Historic Site
 - ✕ Access Closures
 - Ⓢ Public Facility
 - Ⓢ Major Employers
 - Displacements**
 - Ⓢ Residence
 - Ⓢ Residential Outbuilding
 - Ⓢ Farm Residence
 - Ⓢ Farm Outbuilding
 - Ⓢ Farm Business
 - Ⓢ Farm Business Outbuilding
 - Ⓢ Business
 - Access Impacts**
 - Ⓢ Residence
 - Ⓢ Residential Outbuilding
 - Ⓢ Farm Residence
 - Ⓢ Farm Outbuilding
 - Ⓢ Farm Business
 - Ⓢ Farm Business Outbuilding
 - Ⓢ Public Facility
- Sources:
 Illinois Department of Natural Resources, Illinois Natural History Survey, U.S. Geological Survey
 Data to be used for reference only



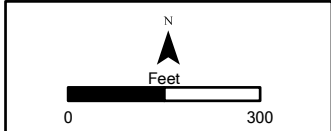
SHEET 106 OF 185
**ENVIRONMENTAL
 RESOURCES**



Aerial Background Copyright: © 2012 Esri, DeLorme, NAVTEQ, TomTom
 Source: Esri, DigitalGlobe, GeoEye, I-cubed, USDA, USGS, AEX, Getmapping, Aerogrid, IGN, IGP, swisstopo, and the GIS User Community

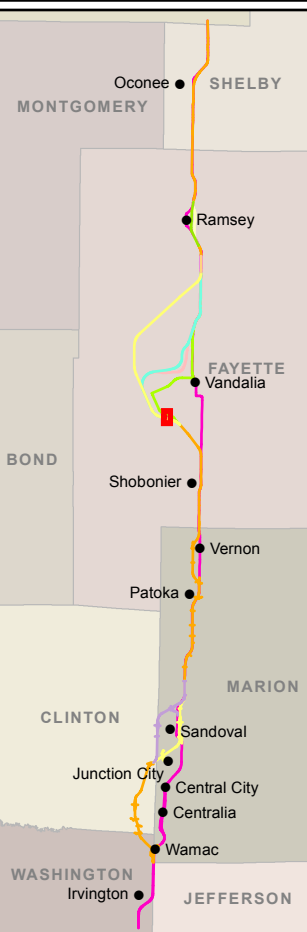


- Legend**
- Existing U.S. 51
 - U.S. 51 Build Alternative
 - CS Alt 1
 - CS Alt 2
 - V Alt 1
 - V Alt 2
 - V Alt 3
 - V Alt 4
 - Ramsey Creek Option A
 - Ramsey Creek Option B
 - R Alt 1
 - R Alt 2
 - Alternative Centerline
 - Alternative Right-of-Way
 - Biologically Significant Stream
 - Stream
 - Centennial Farm
 - Sesquicentennial Farm
 - State Park
 - INHS High Quality Wetland
 - INHS Wetland
 - INAI Site
 - Uneconomic Remnant
 - Important Use Area
 - REC Site
 - Floodplain
 - County Boundary
 - Municipality Boundary
 - Grade Separation
 - Noise Receptor
 - Monitored Noise Receptor
 - Quarry
 - CERCLIS Site
 - National Register Historic Site
 - Access Closures
 - Public Facility
 - Major Employers
 - Displacements**
 - Residence
 - Residential Outbuilding
 - Farm Residence
 - Farm Outbuilding
 - Farm Business
 - Farm Business Outbuilding
 - Business
 - Access Impacts**
 - Residence
 - Residential Outbuilding
 - Farm Residence
 - Farm Outbuilding
 - Farm Business
 - Farm Business Outbuilding
 - Public Facility
- Sources:
 Illinois Department of Natural Resources, Illinois Natural History Survey, U.S. Geological Survey
 Data to be used for reference only

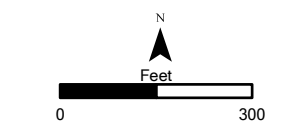


SHEET 107 OF 185

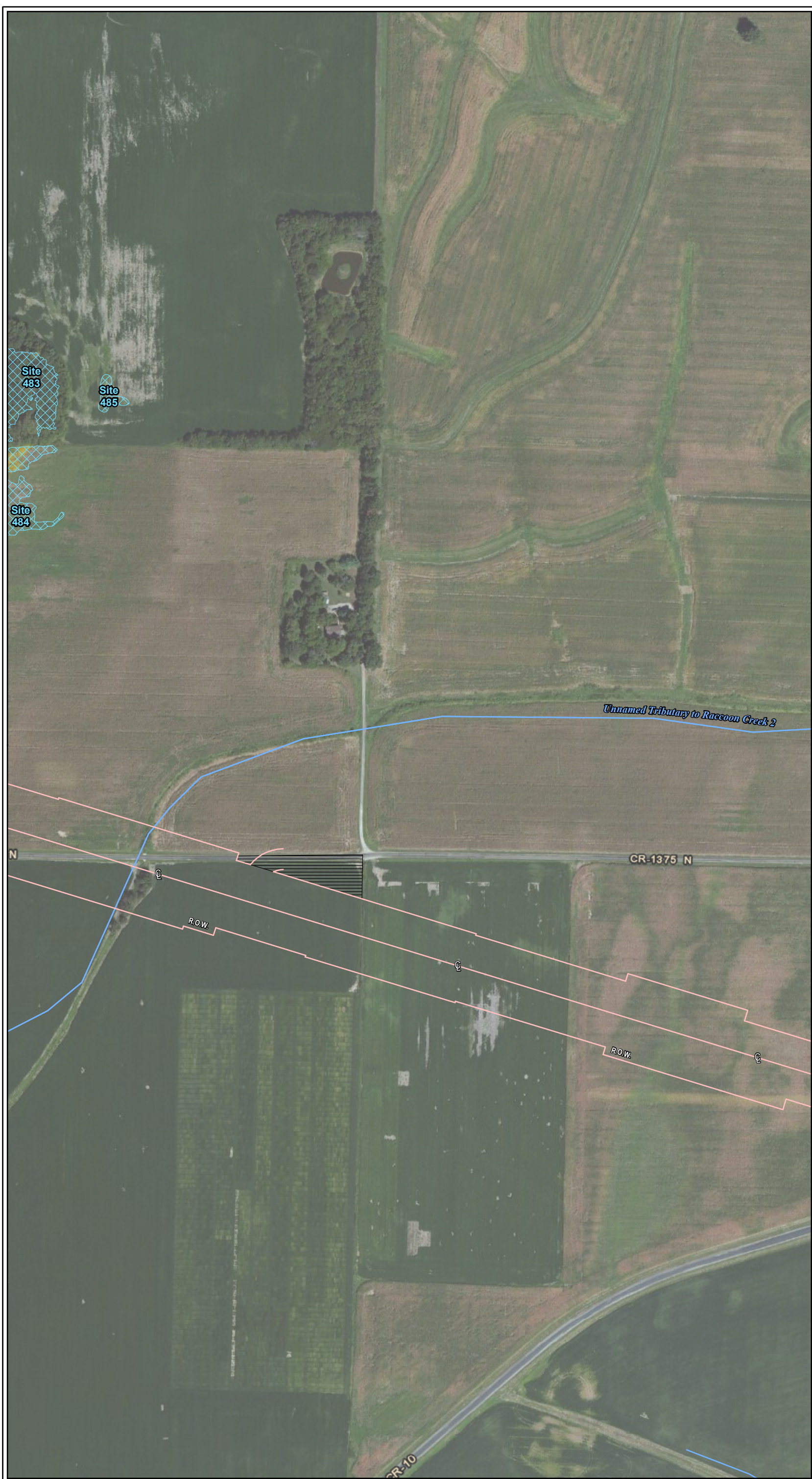
**ENVIRONMENTAL
RESOURCES**



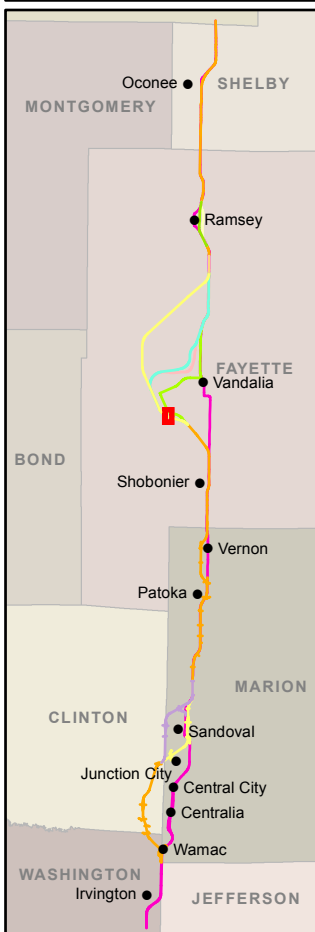
- Legend**
- Existing U.S. 51
 - U.S. 51 Build Alternative
 - CS Alt 1
 - CS Alt 2
 - V Alt 1
 - V Alt 2
 - V Alt 3
 - V Alt 4
 - Ramsey Creek Option A
 - Ramsey Creek Option B
 - R Alt 1
 - R Alt 2
 - Alternative Centerline
 - Alternative Right-of-Way
 - Biologically Significant Stream
 - Stream
 - Centennial Farm
 - Sesquicentennial Farm
 - State Park
 - INHS High Quality Wetland
 - INHS Wetland
 - INAI Site
 - Uneconomic Remnant
 - Important Use Area
 - REC Site
 - Floodplain
 - County Boundary
 - Municipality Boundary
 - Grade Separation
 - Noise Receptor
 - Monitored Noise Receptor
 - Quarry
 - CERCLIS Site
 - National Register Historic Site
 - Access Closures
 - Public Facility
 - Major Employers
 - Displacements**
 - Residence
 - Residential Outbuilding
 - Farm Residence
 - Farm Outbuilding
 - Farm Business
 - Farm Business Outbuilding
 - Business
 - Access Impacts**
 - Residence
 - Residential Outbuilding
 - Farm Residence
 - Farm Outbuilding
 - Farm Business
 - Farm Business Outbuilding
 - Public Facility
- Sources:
 Illinois Department of Natural Resources, Illinois Natural History Survey, U.S. Geological Survey
 Data to be used for reference only



SHEET 108 OF 185
ENVIRONMENTAL RESOURCES

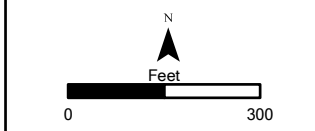


Aerial Background Copyright: © 2012 Esri, DeLorme, NAVTEQ, TomTom
 Source: Esri, DigitalGlobe, GeoEye, I-cubed, USDA, USGS, AEX, Getmapping, Aerogrid, IGN, IGP, swisstopo, and the GIS User Community



- Legend**
- Existing U.S. 51
 - U.S. 51 Build Alternative
 - CS Alt 1
 - CS Alt 2
 - V Alt 1
 - V Alt 2
 - V Alt 3
 - V Alt 4
 - Ramsey Creek Option A
 - Ramsey Creek Option B
 - R Alt 1
 - R Alt 2
 - Ⓢ Alternative Centerline
 - R.O.W. Alternative Right-of-Way
 - Biologically Significant Stream
 - Stream
 - Centennial Farm
 - Sesquicentennial Farm
 - State Park
 - INHS High Quality Wetland
 - INHS Wetland
 - INAI Site
 - Uneconomic Remnant
 - Important Use Area
 - REC Site
 - Floodplain
 - County Boundary
 - Municipality Boundary
 - Grade Separation
 - Ⓢ Noise Receptor
 - Ⓢ Monitored Noise Receptor
 - Ⓢ Quarry
 - Ⓢ CERCLIS Site
 - Ⓢ National Register Historic Site
 - ✕ Access Closures
 - Ⓢ Public Facility
 - Ⓢ Major Employers
 - Displacements**
 - Ⓢ Residence
 - Ⓢ Residential Outbuilding
 - Ⓢ Farm Residence
 - Ⓢ Farm Outbuilding
 - Ⓢ Farm Business
 - Ⓢ Farm Business Outbuilding
 - Ⓢ Business
 - Access Impacts**
 - Ⓢ Residence
 - Ⓢ Residential Outbuilding
 - Ⓢ Farm Residence
 - Ⓢ Farm Outbuilding
 - Ⓢ Farm Business
 - Ⓢ Farm Business Outbuilding
 - Ⓢ Public Facility

Sources:
 Illinois Department of Natural Resources, Illinois
 Natural History Survey, U.S. Geological Survey
 Data to be used for reference only

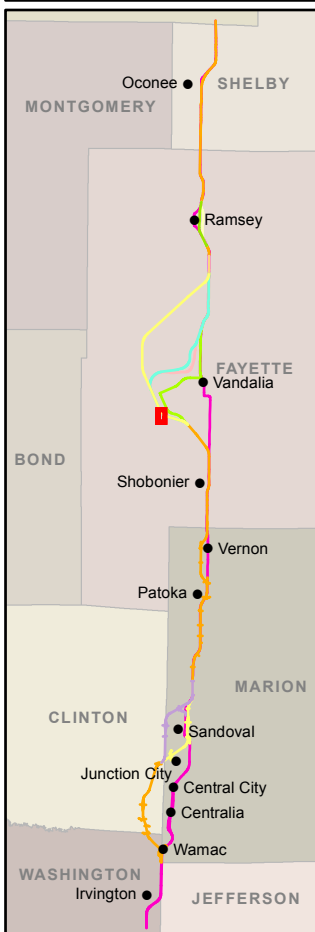


SHEET 109 OF 185

**ENVIRONMENTAL
RESOURCES**

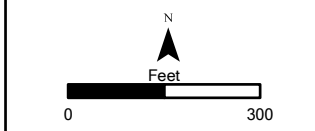


Aerial Background Copyright: © 2012 Esri, DeLorme, NAVTEQ, TomTom
 Source: Esri, DigitalGlobe, GeoEye, i-cubed, USDA, USGS, AEX, Getmapping, Aerogrid, IGN, IGP, swisstopo, and the GIS User Community



- Legend**
- Existing U.S. 51
 - U.S. 51 Build Alternative
 - CS Alt 1
 - CS Alt 2
 - V Alt 1
 - V Alt 2
 - V Alt 3
 - V Alt 4
 - Ramsey Creek Option A
 - Ramsey Creek Option B
 - R Alt 1
 - R Alt 2
 - Alternative Centerline
 - Alternative Right-of-Way
 - Biologically Significant Stream
 - Stream
 - Centennial Farm
 - Sesquicentennial Farm
 - State Park
 - INHS High Quality Wetland
 - INHS Wetland
 - INAI Site
 - Uneconomic Remnant
 - Important Use Area
 - REC Site
 - Floodplain
 - County Boundary
 - Municipality Boundary
 - Noise Receptor
 - Monitored Noise Receptor
 - Quarry
 - CERCLIS Site
 - National Register Historic Site
 - Access Closures
 - Public Facility
 - Major Employers
 - Displacements**
 - Residence
 - Residential Outbuilding
 - Farm Residence
 - Farm Outbuilding
 - Farm Business
 - Farm Business Outbuilding
 - Business
 - Access Impacts**
 - Residence
 - Residential Outbuilding
 - Farm Residence
 - Farm Outbuilding
 - Farm Business
 - Farm Business Outbuilding
 - Public Facility

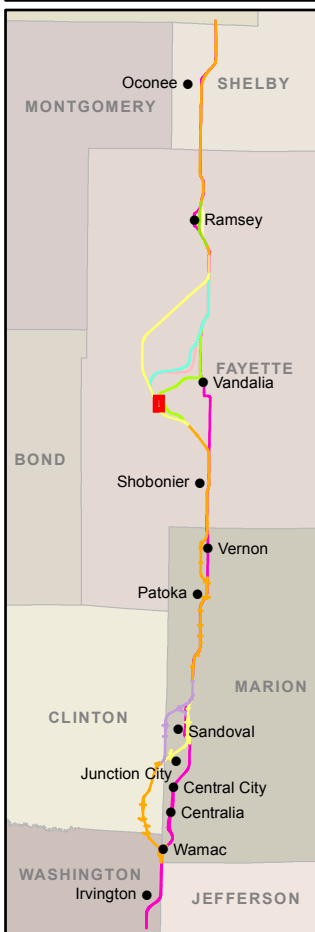
Sources:
 Illinois Department of Natural Resources, Illinois
 Natural History Survey, U.S. Geological Survey
 Data to be used for reference only



SHEET 110 OF 185
**ENVIRONMENTAL
 RESOURCES**

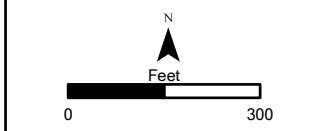


Aerial Background Copyright: © 2012 Esri, DeLorme, NAVTEQ, TomTom
 Source: Esri, DigitalGlobe, GeoEye, i-cubed, USDA, USGS, AEX, Getmapping, Aerogrid, IGN, IGP, swisstopo, and the GIS User Community



- Legend**
- Existing U.S. 51
 - U.S. 51 Build Alternative
 - CS Alt 1
 - CS Alt 2
 - V Alt 1
 - V Alt 2
 - V Alt 3
 - V Alt 4
 - Ramsey Creek Option A
 - Ramsey Creek Option B
 - R Alt 1
 - R Alt 2
 - Alternative Centerline
 - Alternative Right-of-Way
 - Biologically Significant Stream
 - Stream
 - Centennial Farm
 - Sesquicentennial Farm
 - State Park
 - INHS High Quality Wetland
 - INHS Wetland
 - INAI Site
 - Uneconomic Remnant
 - Important Use Area
 - REC Site
 - Floodplain
 - County Boundary
 - Municipality Boundary
 - Grade Separation
 - Noise Receptor
 - Monitored Noise Receptor
 - Quarry
 - CERCLIS Site
 - National Register Historic Site
 - Access Closures
 - Public Facility
 - Major Employers
 - Displacements**
 - Residence
 - Residential Outbuilding
 - Farm Residence
 - Farm Outbuilding
 - Farm Business
 - Farm Business Outbuilding
 - Business
 - Access Impacts**
 - Residence
 - Residential Outbuilding
 - Farm Residence
 - Farm Outbuilding
 - Farm Business
 - Farm Business Outbuilding
 - Public Facility

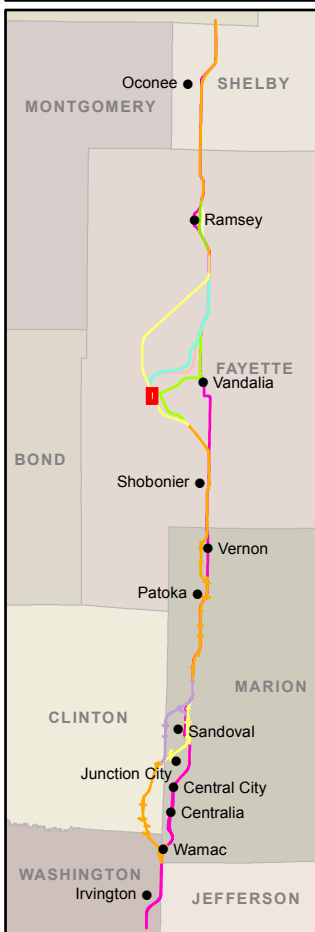
Sources:
 Illinois Department of Natural Resources, Illinois
 Natural History Survey, U.S. Geological Survey
 Data to be used for reference only



SHEET 111 OF 185
**ENVIRONMENTAL
 RESOURCES**

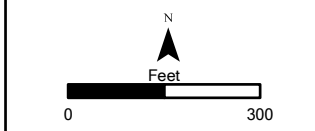


Aerial Background Copyright: © 2012 Esri, DeLorme, NAVTEQ, TomTom
 Source: Esri, DigitalGlobe, GeoEye, i-cubed, USDA, USGS, AEX, Getmapping, Aerogrid, IGN, IGP, swisstopo, and the GIS User Community

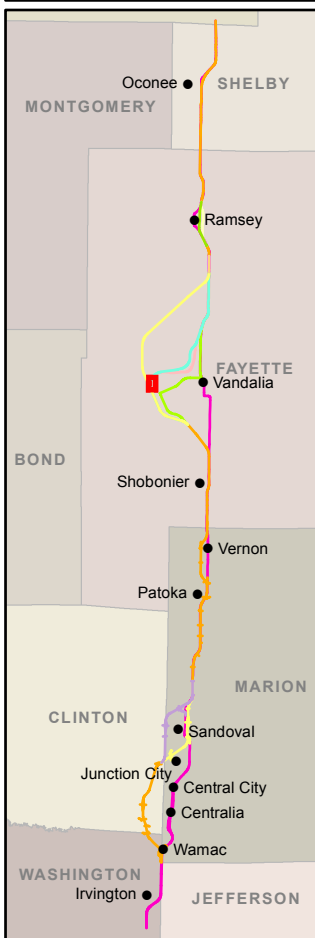


- Legend**
- Existing U.S. 51
 - U.S. 51 Build Alternative
 - CS Alt 1
 - CS Alt 2
 - V Alt 1
 - V Alt 2
 - V Alt 3
 - V Alt 4
 - Ramsey Creek Option A
 - Ramsey Creek Option B
 - R Alt 1
 - R Alt 2
 - Alternative Centerline
 - Alternative Right-of-Way
 - Biologically Significant Stream
 - Stream
 - Centennial Farm
 - Sesquicentennial Farm
 - State Park
 - INHS High Quality Wetland
 - INHS Wetland
 - INAI Site
 - Uneconomic Remnant
 - Important Use Area
 - REC Site
 - Floodplain
 - County Boundary
 - Municipality Boundary
 - Grade Separation
 - Noise Receptor
 - Monitored Noise Receptor
 - Quarry
 - CERCLIS Site
 - National Register Historic Site
 - Access Closures
 - Public Facility
 - Major Employers
 - Displacements**
 - Residence
 - Residential Outbuilding
 - Farm Residence
 - Farm Outbuilding
 - Farm Business
 - Farm Business Outbuilding
 - Business
 - Access Impacts**
 - Residence
 - Residential Outbuilding
 - Farm Residence
 - Farm Outbuilding
 - Farm Business
 - Farm Business Outbuilding
 - Public Facility

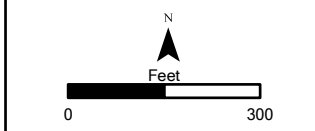
Sources:
 Illinois Department of Natural Resources, Illinois
 Natural History Survey, U.S. Geological Survey
 Data to be used for reference only



Aerial Background Copyright: © 2012 Esri, DeLorme, NAVTEQ, TomTom
 Source: Esri, DigitalGlobe, GeoEye, i-cubed, USDA, USGS, AEX, Getmapping, Aerogrid, IGN, IGP, swisstopo, and the GIS User Community

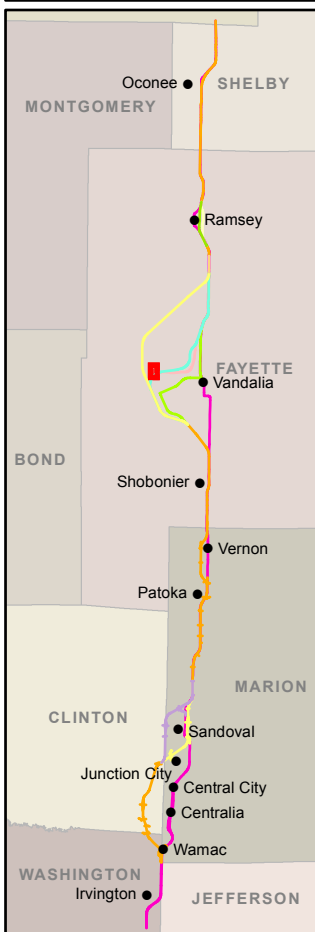


- Legend**
- Existing U.S. 51
 - U.S. 51 Build Alternative
 - CS Alt 1
 - CS Alt 2
 - V Alt 1
 - V Alt 2
 - V Alt 3
 - V Alt 4
 - Ramsey Creek Option A
 - Ramsey Creek Option B
 - R Alt 1
 - R Alt 2
 - Alternative Centerline
 - Alternative Right-of-Way
 - Biologically Significant Stream
 - Stream
 - Centennial Farm
 - Sesquicentennial Farm
 - State Park
 - INHS High Quality Wetland
 - INHS Wetland
 - INAI Site
 - Uneconomic Remnant
 - Important Use Area
 - REC Site
 - Floodplain
 - County Boundary
 - Municipality Boundary
 - Grade Separation
 - Noise Receptor
 - Monitored Noise Receptor
 - Quarry
 - CERCLIS Site
 - National Register Historic Site
 - Access Closures
 - Public Facility
 - Major Employers
 - Displacements**
 - Residence
 - Residential Outbuilding
 - Farm Residence
 - Farm Outbuilding
 - Farm Business
 - Farm Business Outbuilding
 - Business
 - Access Impacts**
 - Residence
 - Residential Outbuilding
 - Farm Residence
 - Farm Outbuilding
 - Farm Business
 - Farm Business Outbuilding
 - Business
 - Public Facility
- Sources:
 Illinois Department of Natural Resources, Illinois Natural History Survey, U.S. Geological Survey
 Data to be used for reference only



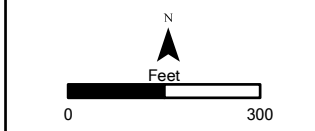
SHEET 113 OF 185
ENVIRONMENTAL RESOURCES

Aerial Background Copyright: © 2012 Esri, DeLorme, NAVTEQ, TomTom
 Source: Esri, DigitalGlobe, GeoEye, i-cubed, USDA, USGS, AEX, Getmapping, Aerogrid, IGN, IGP, swisstopo, and the GIS User Community



- Legend**
- Existing U.S. 51
 - U.S. 51 Build Alternative
 - CS Alt 1
 - CS Alt 2
 - V Alt 1
 - V Alt 2
 - V Alt 3
 - V Alt 4
 - Ramsey Creek Option A
 - Ramsey Creek Option B
 - R Alt 1
 - R Alt 2
 - Alternative Centerline
 - Alternative Right-of-Way
 - Biologically Significant Stream
 - Stream
 - Centennial Farm
 - Sesquicentennial Farm
 - State Park
 - INHS High Quality Wetland
 - INHS Wetland
 - INAI Site
 - Uneconomic Remnant
 - Important Use Area
 - REC Site
 - Floodplain
 - County Boundary
 - Municipality Boundary
 - Grade Separation
 - Noise Receptor
 - Monitored Noise Receptor
 - Quarry
 - CERCLIS Site
 - National Register Historic Site
 - Access Closures
 - Public Facility
 - Major Employers
 - Displacements**
 - Residence
 - Residential Outbuilding
 - Farm Residence
 - Farm Outbuilding
 - Farm Business
 - Farm Business Outbuilding
 - Business
 - Access Impacts**
 - Residence
 - Residential Outbuilding
 - Farm Residence
 - Farm Outbuilding
 - Farm Business
 - Farm Business Outbuilding
 - Public Facility

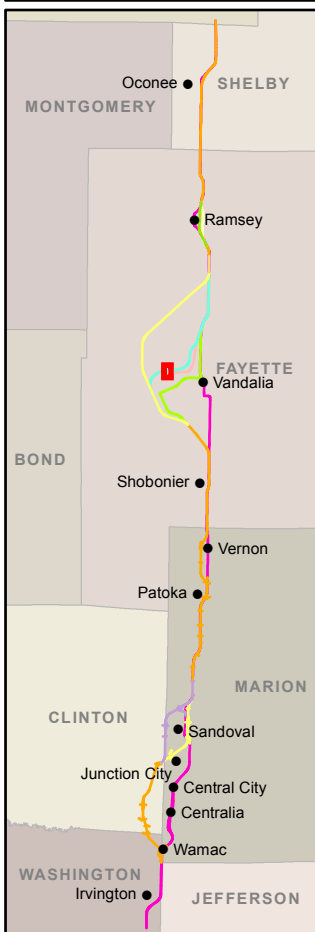
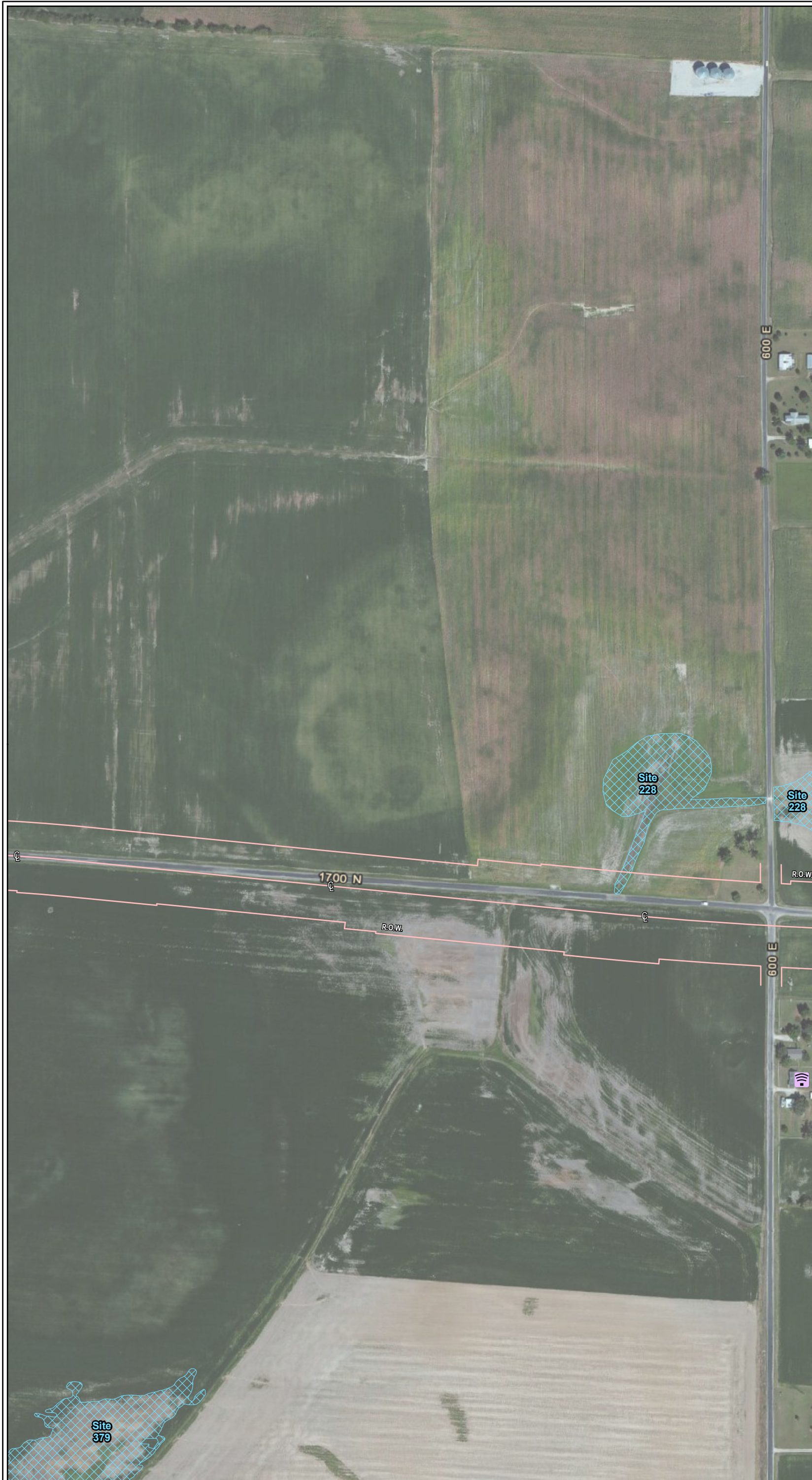
Sources:
 Illinois Department of Natural Resources, Illinois
 Natural History Survey, U.S. Geological Survey
 Data to be used for reference only



SHEET 114 OF 185
**ENVIRONMENTAL
 RESOURCES**

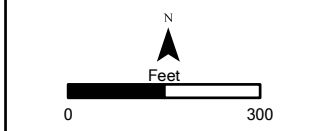


Aerial Background Copyright: © 2012 Esri, DeLorme, NAVTEQ, TomTom
 Source: Esri, DigitalGlobe, GeoEye, i-cubed, USDA, USGS, AEX, Getmapping, Aerogrid, IGN, IGP, swisstopo, and the GIS User Community

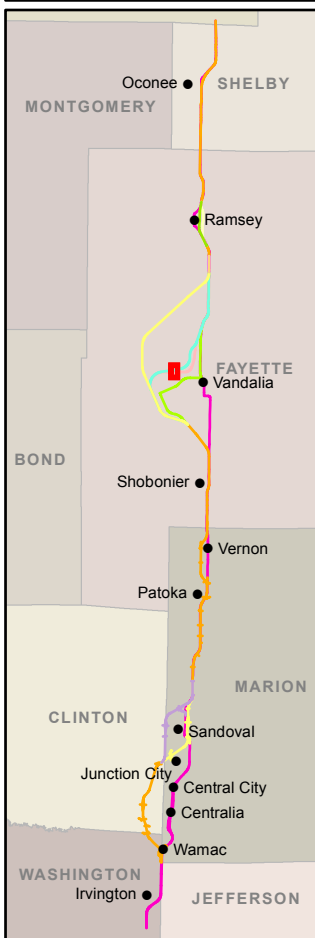


- Legend**
- Existing U.S. 51
 - U.S. 51 Build Alternative
 - CS Alt 1
 - CS Alt 2
 - V Alt 1
 - V Alt 2
 - V Alt 3
 - V Alt 4
 - Ramsey Creek Option A
 - Ramsey Creek Option B
 - R Alt 1
 - R Alt 2
 - Alternative Centerline
 - Alternative Right-of-Way
 - Biologically Significant Stream
 - Stream
 - Centennial Farm
 - Sesquicentennial Farm
 - State Park
 - INHS High Quality Wetland
 - INHS Wetland
 - INAI Site
 - Uneconomic Remnant
 - Important Use Area
 - REC Site
 - Floodplain
 - County Boundary
 - Municipality Boundary
 - Grade Separation
 - Noise Receptor
 - Monitored Noise Receptor
 - Quarry
 - CERCLIS Site
 - National Register Historic Site
 - Access Closures
 - Public Facility
 - Major Employers
 - Displacements**
 - Residence
 - Residential Outbuilding
 - Farm Residence
 - Farm Outbuilding
 - Farm Business
 - Farm Business Outbuilding
 - Business
 - Access Impacts**
 - Residence
 - Residential Outbuilding
 - Farm Residence
 - Farm Outbuilding
 - Farm Business
 - Farm Business Outbuilding
 - Public Facility

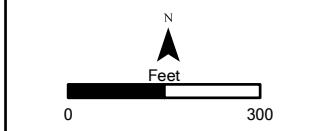
Sources:
 Illinois Department of Natural Resources, Illinois
 Natural History Survey, U.S. Geological Survey
 Data to be used for reference only



Aerial Background Copyright: © 2012 Esri, DeLorme, NAVTEQ, TomTom
 Source: Esri, DigitalGlobe, GeoEye, i-cubed, USDA, USGS, AEX, Getmapping, Aerogrid, IGN, IGP, swisstopo, and the GIS User Community



- Legend**
- Existing U.S. 51
 - U.S. 51 Build Alternative
 - CS Alt 1
 - CS Alt 2
 - V Alt 1
 - V Alt 2
 - V Alt 3
 - V Alt 4
 - Ramsey Creek Option A
 - Ramsey Creek Option B
 - R Alt 1
 - R Alt 2
 - Alternative Centerline
 - Alternative Right-of-Way
 - Biologically Significant Stream
 - Stream
 - Centennial Farm
 - Sesquicentennial Farm
 - State Park
 - INHS High Quality Wetland
 - INHS Wetland
 - INAI Site
 - Uneconomic Remnant
 - Important Use Area
 - REC Site
 - Floodplain
 - County Boundary
 - Municipality Boundary
 - Grade Separation
 - Noise Receptor
 - Monitored Noise Receptor
 - Quarry
 - CERCLIS Site
 - National Register Historic Site
 - Access Closures
 - Public Facility
 - Major Employers
 - Displacements**
 - Residence
 - Residential Outbuilding
 - Farm Residence
 - Farm Outbuilding
 - Farm Business
 - Farm Business Outbuilding
 - Business
 - Access Impacts**
 - Residence
 - Residential Outbuilding
 - Farm Residence
 - Farm Outbuilding
 - Farm Business
 - Farm Business Outbuilding
 - Public Facility
- Sources:
 Illinois Department of Natural Resources, Illinois Natural History Survey, U.S. Geological Survey
 Data to be used for reference only



SHEET 117 OF 185
**ENVIRONMENTAL
 RESOURCES**



Aerial Background Copyright: © 2012 Esri, DeLorme, NAVTEQ, TomTom
 Source: Esri, DigitalGlobe, GeoEye, i-cubed, USDA, USGS, AEX, Getmapping, Aerogrid, IGN, IGP, swisstopo, and the GIS User Community