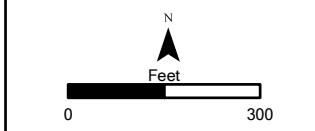


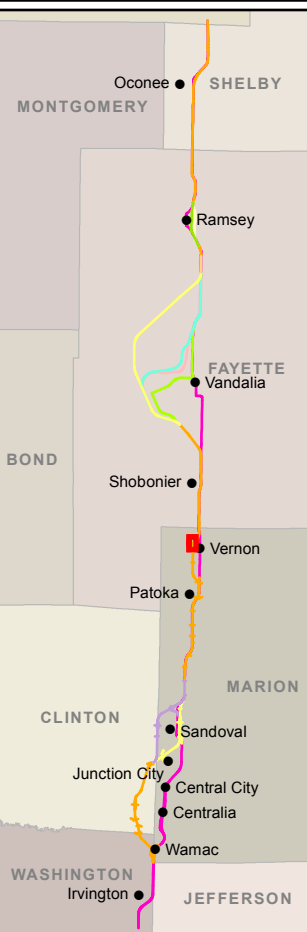
- Legend**
- Existing U.S. 51
 - U.S. 51 Build Alternative
 - CS Alt 1
 - CS Alt 2
 - V Alt 1
 - V Alt 2
 - V Alt 3
 - V Alt 4
 - Ramsey Creek Option A
 - Ramsey Creek Option B
 - R Alt 1
 - R Alt 2
 - Alternative Centerline
 - Alternative Right-of-Way
 - Biologically Significant Stream
 - Stream
 - Centennial Farm
 - Sesquicentennial Farm
 - State Park
 - INHS High Quality Wetland
 - INHS Wetland
 - INAI Site
 - Uneconomic Remnant
 - Important Use Area
 - REC Site
 - Floodplain
 - County Boundary
 - Municipality Boundary
 - Grade Separation
 - Noise Receptor
 - Monitored Noise Receptor
 - Quarry
 - CERCLIS Site
 - National Register Historic Site
 - Access Closures
 - Public Facility
 - Major Employers
 - Displacements**
 - Residence
 - Residential Outbuilding
 - Farm Residence
 - Farm Outbuilding
 - Farm Business
 - Farm Business Outbuilding
 - Business
 - Access Impacts**
 - Residence
 - Residential Outbuilding
 - Farm Residence
 - Farm Outbuilding
 - Farm Business
 - Farm Business Outbuilding
 - Public Facility
- Sources:
 Illinois Department of Natural Resources, Illinois Natural History Survey, U.S. Geological Survey
 Data to be used for reference only



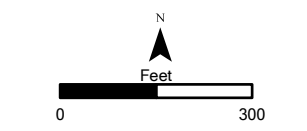
SHEET 47 OF 185
ENVIRONMENTAL RESOURCES



Aerial Background Copyright: © 2012 Esri, DeLorme, NAVTEQ, TomTom
 Source: Esri, DigitalGlobe, GeoEye, i-cubed, USDA, USGS, AEX, Getmapping, Aerogrid, IGN, IGP, swisstopo, and the GIS User Community



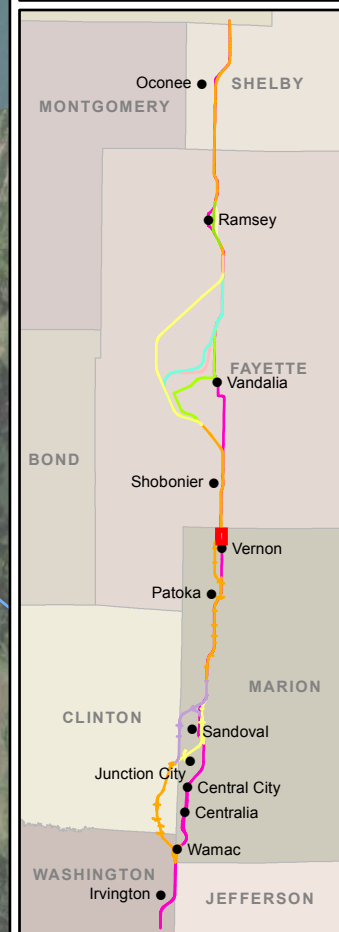
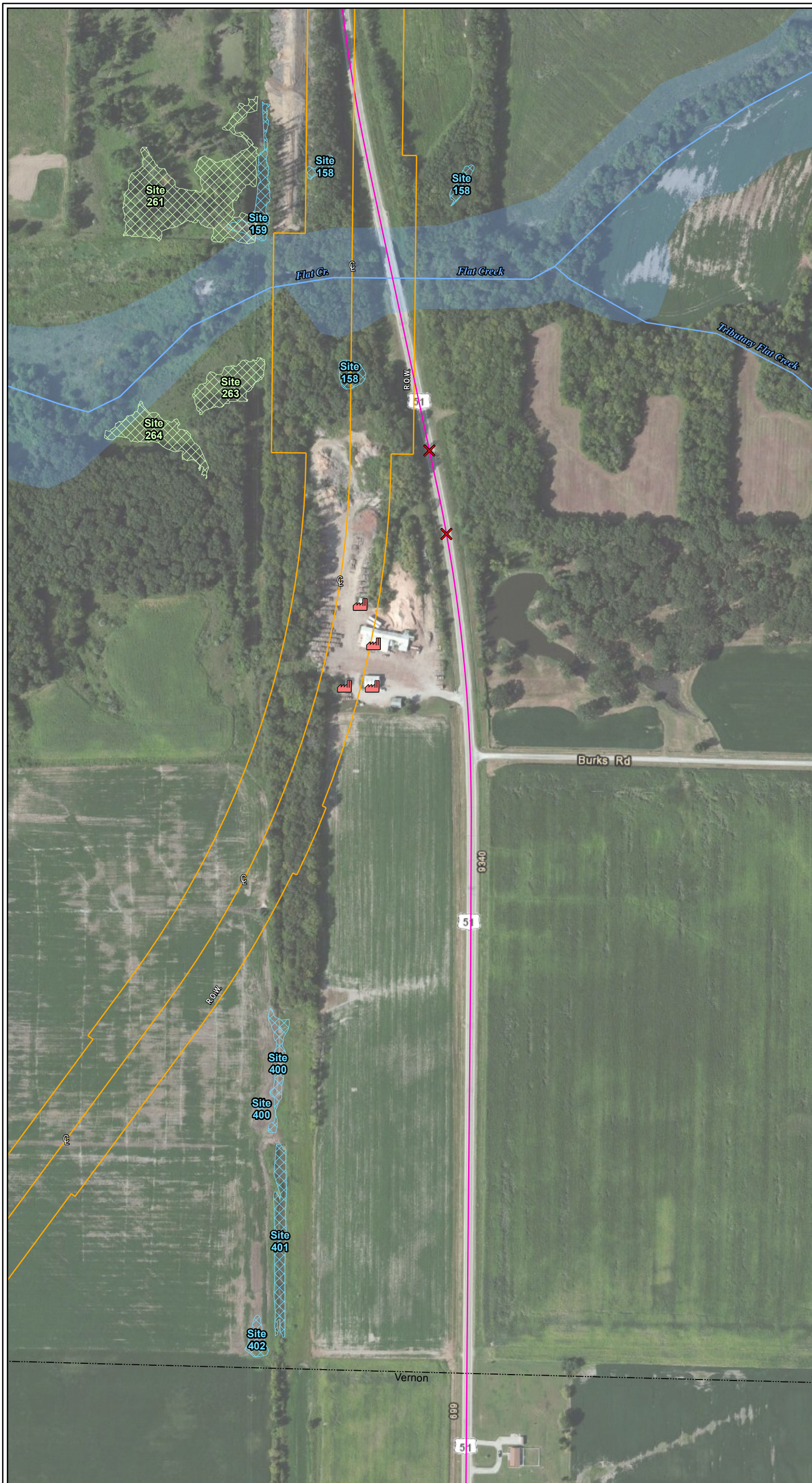
- Legend**
- Existing U.S. 51
 - U.S. 51 Build Alternative
 - CS Alt 1
 - CS Alt 2
 - V Alt 1
 - V Alt 2
 - V Alt 3
 - V Alt 4
 - Ramsey Creek Option A
 - Ramsey Creek Option B
 - R Alt 1
 - R Alt 2
 - Alternative Centerline
 - Alternative Right-of-Way
 - Biologically Significant Stream
 - Stream
 - Centennial Farm
 - Sesquicentennial Farm
 - State Park
 - INHS High Quality Wetland
 - INHS Wetland
 - INAI Site
 - Uneconomic Remnant
 - Important Use Area
 - REC Site
 - Floodplain
 - County Boundary
 - Municipality Boundary
 - Grade Separation
 - Noise Receptor
 - Monitored Noise Receptor
 - Quarry
 - CERCLIS Site
 - National Register Historic Site
 - Access Closures
 - Public Facility
 - Major Employers
 - Displacements**
 - Residence
 - Residential Outbuilding
 - Farm Residence
 - Farm Outbuilding
 - Farm Business
 - Farm Business Outbuilding
 - Business
 - Access Impacts**
 - Residence
 - Residential Outbuilding
 - Farm Residence
 - Farm Outbuilding
 - Farm Business
 - Farm Business Outbuilding
 - Public Facility
- Sources:
 Illinois Department of Natural Resources, Illinois Natural History Survey, U.S. Geological Survey
 Data to be used for reference only



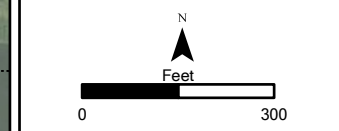
SHEET 48 OF 185
ENVIRONMENTAL RESOURCES



Aerial Background Copyright: © 2012 Esri, DeLorme, NAVTEQ, TomTom
 Source: Esri, DigitalGlobe, GeoEye, i-cubed, USDA, USGS, AEX, Getmapping, Aerogrid, IGN, IGP, swisstopo, and the GIS User Community

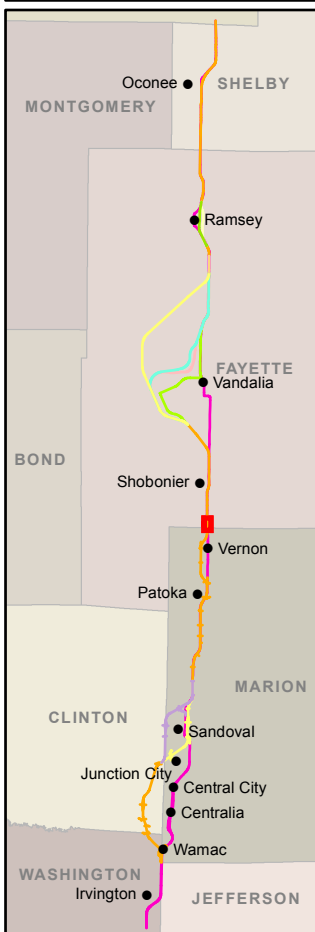


- Legend**
- Existing U.S. 51
 - U.S. 51 Build Alternative
 - CS Alt 1
 - CS Alt 2
 - V Alt 1
 - V Alt 2
 - V Alt 3
 - V Alt 4
 - Ramsey Creek Option A
 - Ramsey Creek Option B
 - R Alt 1
 - R Alt 2
 - Alternative Centerline
 - Alternative Right-of-Way
 - Biologically Significant Stream
 - Stream
 - Centennial Farm
 - Sesquicentennial Farm
 - State Park
 - INHS High Quality Wetland
 - INHS Wetland
 - INAI Site
 - Uneconomic Remnant
 - Important Use Area
 - REC Site
 - Floodplain
 - County Boundary
 - Municipality Boundary
 - Grade Separation
 - Noise Receptor
 - Monitored Noise Receptor
 - Quarry
 - CERCLIS Site
 - National Register Historic Site
 - Access Closures
 - Public Facility
 - Major Employers
 - Displacements**
 - Residence
 - Residential Outbuilding
 - Farm Residence
 - Farm Outbuilding
 - Farm Business
 - Farm Business Outbuilding
 - Business
 - Access Impacts**
 - Residence
 - Residential Outbuilding
 - Farm Residence
 - Farm Outbuilding
 - Farm Business
 - Farm Business Outbuilding
 - Public Facility
- Sources:
 Illinois Department of Natural Resources, Illinois Natural History Survey, U.S. Geological Survey
 Data to be used for reference only



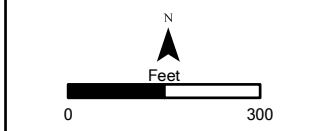
SHEET 49 OF 185
ENVIRONMENTAL RESOURCES

Aerial Background Copyright: © 2012 Esri, DeLorme, NAVTEQ, TomTom
 Source: Esri, DigitalGlobe, GeoEye, i-cubed, USDA, USGS, AEX, Getmapping, Aerogrid, IGN, IGP, swisstopo, and the GIS User Community

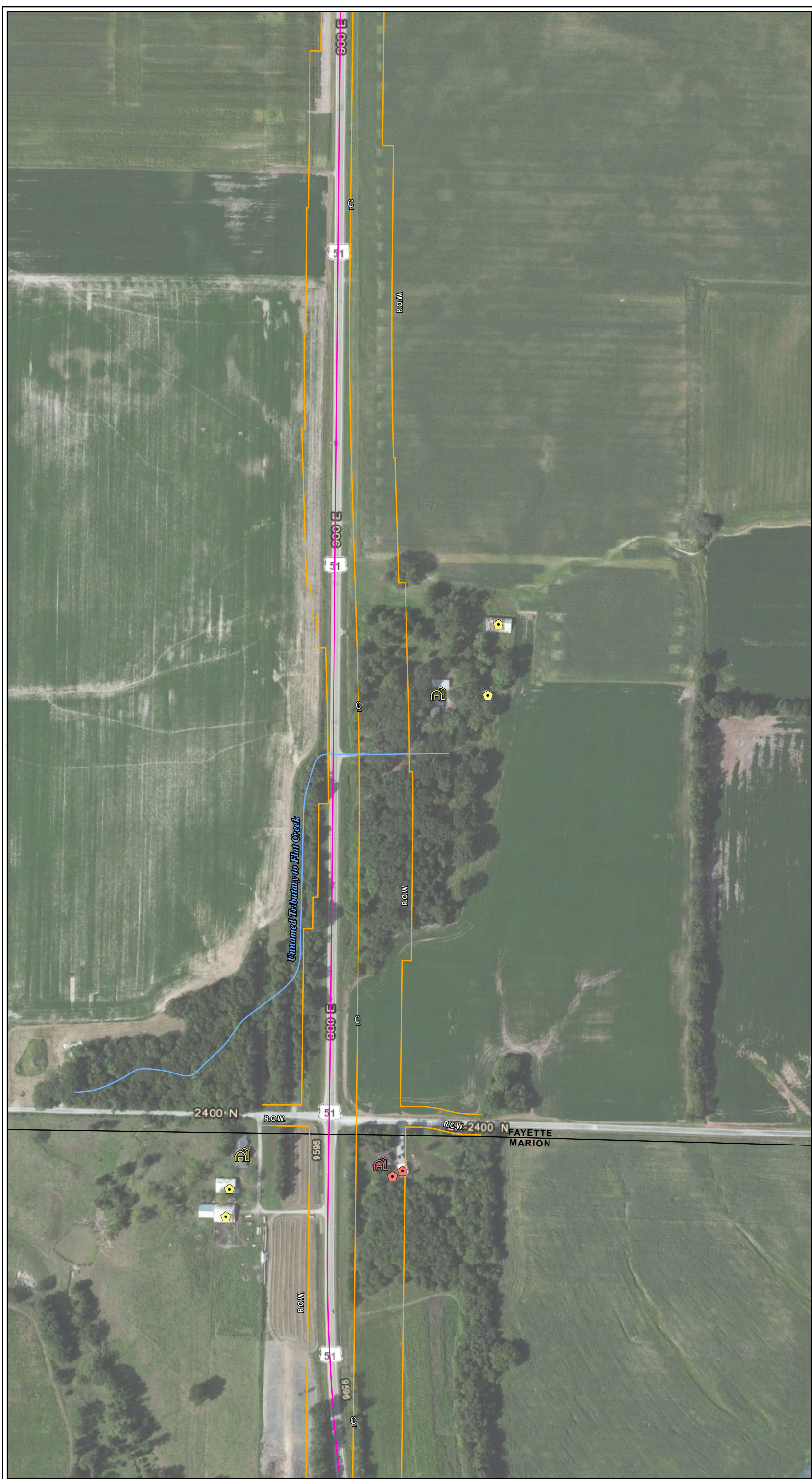


- Legend**
- Existing U.S. 51
 - U.S. 51 Build Alternative
 - CS Alt 1
 - CS Alt 2
 - V Alt 1
 - V Alt 2
 - V Alt 3
 - V Alt 4
 - Ramsey Creek Option A
 - Ramsey Creek Option B
 - R Alt 1
 - R Alt 2
 - Alternative Centerline
 - Alternative Right-of-Way
 - Biologically Significant Stream
 - Stream
 - Centennial Farm
 - Sesquicentennial Farm
 - State Park
 - INHS High Quality Wetland
 - INHS Wetland
 - INAI Site
 - Uneconomic Remnant
 - Important Use Area
 - REC Site
 - Floodplain
 - County Boundary
 - Municipality Boundary
 - Grade Separation
 - Noise Receptor
 - Monitored Noise Receptor
 - Quarry
 - CERCLIS Site
 - National Register Historic Site
 - Access Closures
 - Public Facility
 - Major Employers
 - Displacements**
 - Residence
 - Residential Outbuilding
 - Farm Residence
 - Farm Outbuilding
 - Farm Business
 - Farm Business Outbuilding
 - Business
 - Access Impacts**
 - Residence
 - Residential Outbuilding
 - Farm Residence
 - Farm Outbuilding
 - Farm Business
 - Farm Business Outbuilding
 - Public Facility

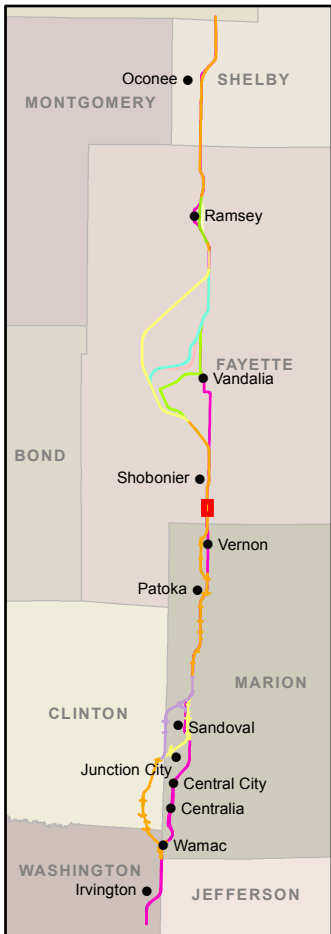
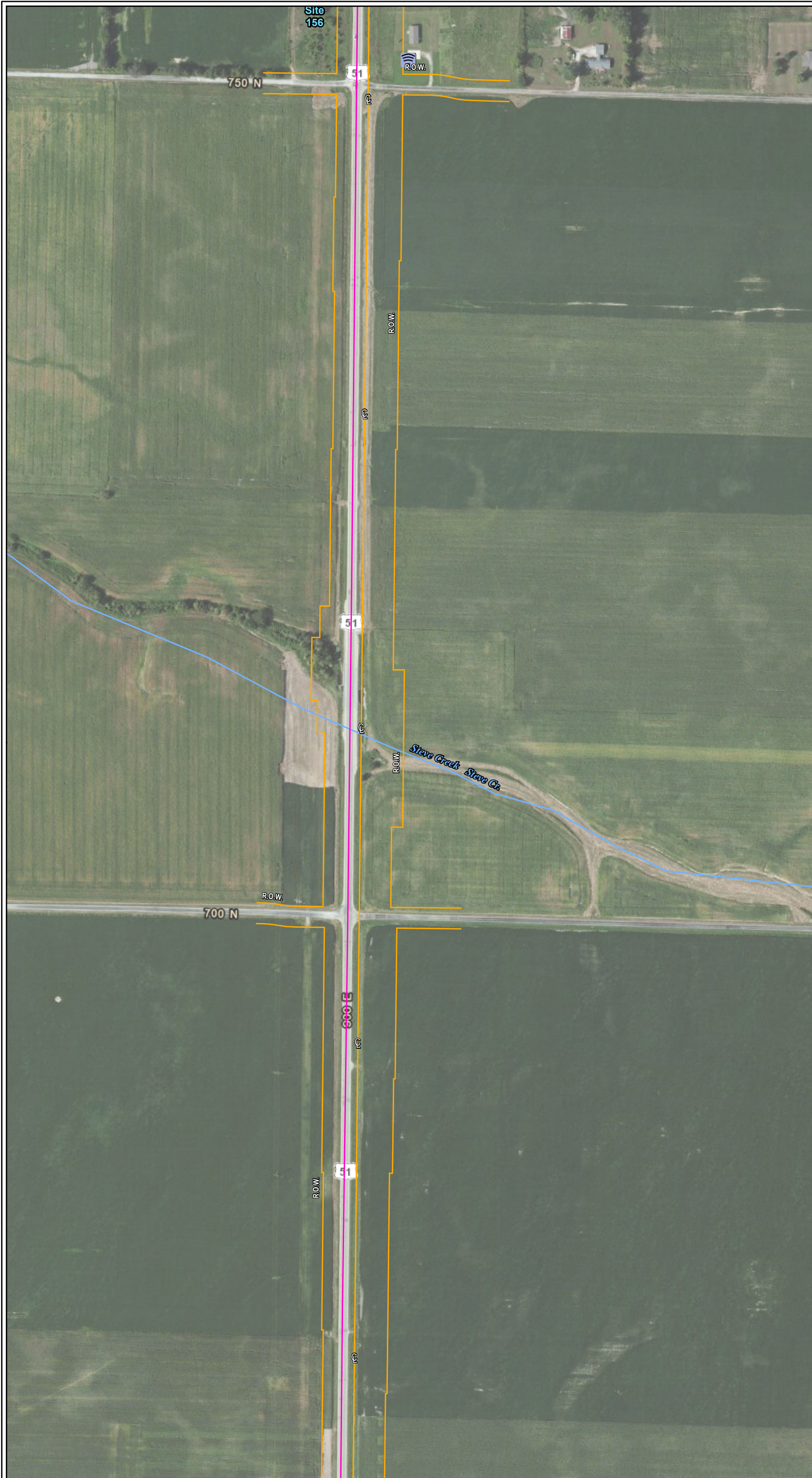
Sources:
 Illinois Department of Natural Resources, Illinois
 Natural History Survey, U.S. Geological Survey
 Data to be used for reference only



SHEET 50 OF 185
**ENVIRONMENTAL
 RESOURCES**

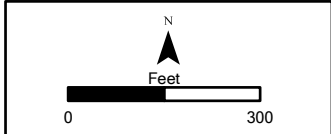


Aerial Background Copyright: © 2012 Esri, DeLorme, NAVTEQ, TomTom
 Source: Esri, DigitalGlobe, GeoEye, i-cubed, USDA, USGS, AEX, Getmapping, Aerogrid, IGN, IGP, swisstopo, and the GIS User Community

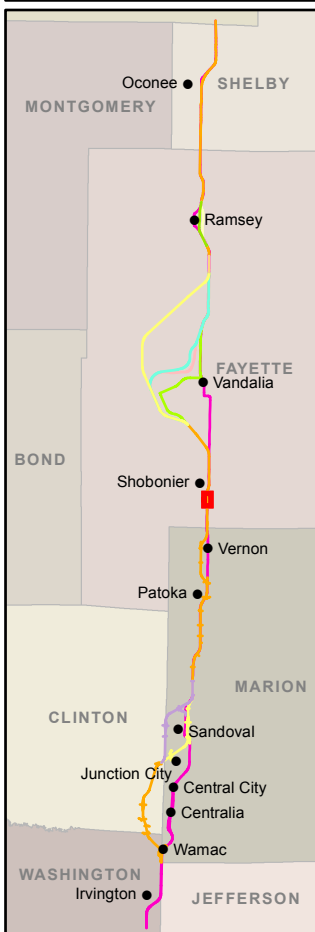


- Legend**
- Existing U.S. 51
 - U.S. 51 Build Alternative
 - CS Alt 1
 - CS Alt 2
 - V Alt 1
 - V Alt 2
 - V Alt 3
 - V Alt 4
 - Ramsey Creek Option A
 - Ramsey Creek Option B
 - R Alt 1
 - R Alt 2
 - Alternative Centerline
 - Alternative Right-of-Way
 - Biologically Significant Stream
 - Stream
 - Centennial Farm
 - Sesquicentennial Farm
 - State Park
 - INHS High Quality Wetland
 - INHS Wetland
 - INAI Site
 - Uneconomic Remnant
 - Important Use Area
 - REC Site
 - Floodplain
 - County Boundary
 - Municipality Boundary
 - Grade Separation
 - Noise Receptor
 - Monitored Noise Receptor
 - Quarry
 - CERCLIS Site
 - National Register Historic Site
 - Access Closures
 - Public Facility
 - Major Employers
 - Displacements**
 - Residence
 - Residential Outbuilding
 - Farm Residence
 - Farm Outbuilding
 - Farm Business
 - Farm Business Outbuilding
 - Business
 - Access Impacts**
 - Residence
 - Residential Outbuilding
 - Farm Residence
 - Farm Outbuilding
 - Farm Business
 - Farm Business Outbuilding
 - Public Facility

Sources:
 Illinois Department of Natural Resources, Illinois
 Natural History Survey, U.S. Geological Survey
 Data to be used for reference only

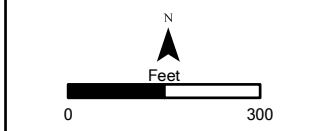


Aerial Background Copyright: © 2012 Esri, DeLorme, NAVTEQ, TomTom
 Source: Esri, DigitalGlobe, GeoEye, i-cubed, USDA, USGS, AEX, Getmapping, Aerogrid, IGN, IGP, swisstopo, and the GIS User Community

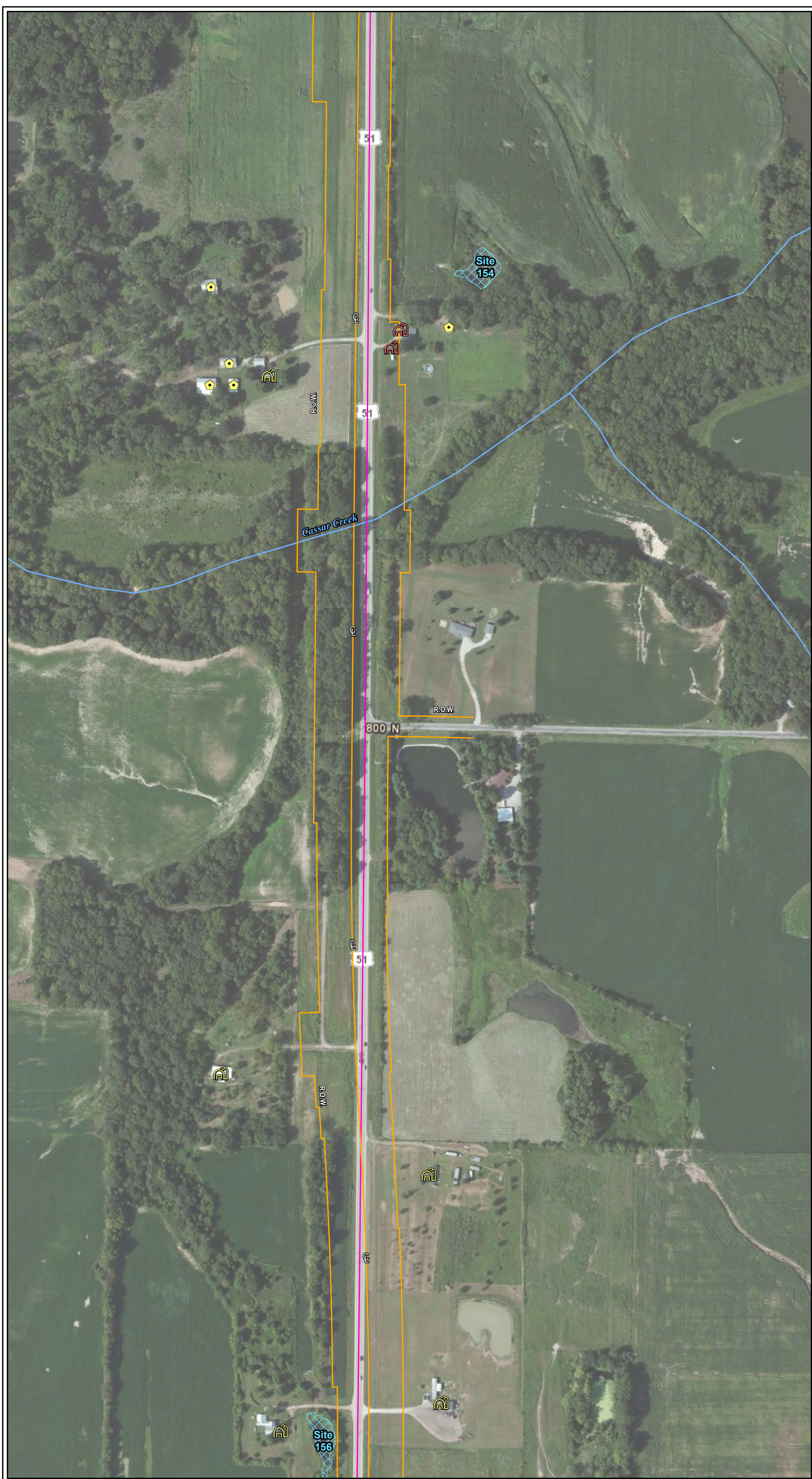


- Legend**
- Existing U.S. 51
 - U.S. 51 Build Alternative
 - CS Alt 1
 - CS Alt 2
 - V Alt 1
 - V Alt 2
 - V Alt 3
 - V Alt 4
 - Ramsey Creek Option A
 - Ramsey Creek Option B
 - R Alt 1
 - R Alt 2
 - Alternative Centerline
 - Alternative Right-of-Way
 - Biologically Significant Stream
 - Stream
 - Centennial Farm
 - Sesquicentennial Farm
 - State Park
 - INHS High Quality Wetland
 - INHS Wetland
 - INAI Site
 - Uneconomic Remnant
 - Important Use Area
 - REC Site
 - Floodplain
 - County Boundary
 - Municipality Boundary
 - Grade Separation
 - Noise Receptor
 - Monitored Noise Receptor
 - Quarry
 - CERCLIS Site
 - National Register Historic Site
 - Access Closures
 - Public Facility
 - Major Employers
 - Displacements**
 - Residence
 - Residential Outbuilding
 - Farm Residence
 - Farm Outbuilding
 - Farm Business
 - Farm Business Outbuilding
 - Business
 - Access Impacts**
 - Residence
 - Residential Outbuilding
 - Farm Residence
 - Farm Outbuilding
 - Farm Business
 - Farm Business Outbuilding
 - Public Facility

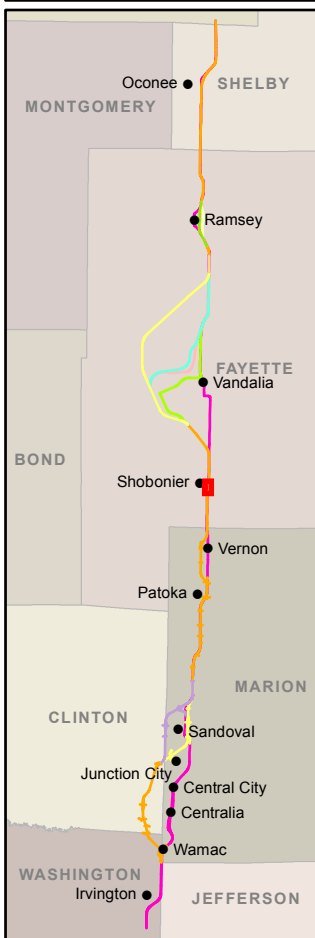
Sources:
 Illinois Department of Natural Resources, Illinois
 Natural History Survey, U.S. Geological Survey
 Data to be used for reference only



SHEET 52 OF 185
**ENVIRONMENTAL
 RESOURCES**

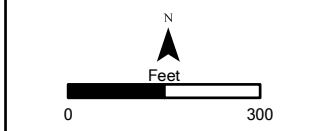


Aerial Background Copyright: © 2012 Esri, DeLorme, NAVTEQ, TomTom
 Source: Esri, DigitalGlobe, GeoEye, i-cubed, USDA, USGS, AEX, Getmapping, Aerogrid, IGN, IGP, swisstopo, and the GIS User Community



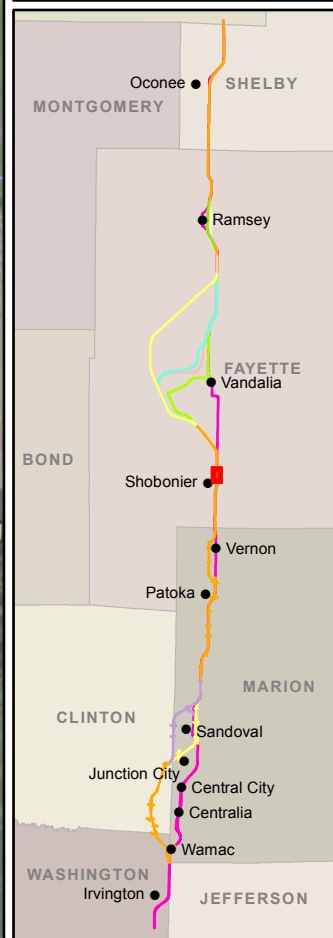
- Legend**
- Existing U.S. 51
 - U.S. 51 Build Alternative
 - CS Alt 1
 - CS Alt 2
 - V Alt 1
 - V Alt 2
 - V Alt 3
 - V Alt 4
 - Ramsey Creek Option A
 - Ramsey Creek Option B
 - R Alt 1
 - R Alt 2
 - Alternative Centerline
 - Alternative Right-of-Way
 - Biologically Significant Stream
 - Stream
 - Centennial Farm
 - Sesquicentennial Farm
 - State Park
 - INHS High Quality Wetland
 - INHS Wetland
 - INA Site
 - Uneconomic Remnant
 - Important Use Area
 - REC Site
 - Floodplain
 - County Boundary
 - Municipality Boundary
 - Grade Separation
 - Noise Receptor
 - Monitored Noise Receptor
 - Quarry
 - CERCLIS Site
 - National Register Historic Site
 - Access Closures
 - Public Facility
 - Major Employers
 - Displacements**
 - Residence
 - Residential Outbuilding
 - Farm Residence
 - Farm Outbuilding
 - Farm Business
 - Farm Business Outbuilding
 - Business
 - Access Impacts**
 - Residence
 - Residential Outbuilding
 - Farm Residence
 - Farm Outbuilding
 - Farm Business
 - Farm Business Outbuilding
 - Public Facility

Sources:
 Illinois Department of Natural Resources, Illinois
 Natural History Survey, U.S. Geological Survey
 Data to be used for reference only

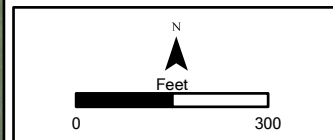


SHEET 53 OF 185
**ENVIRONMENTAL
 RESOURCES**



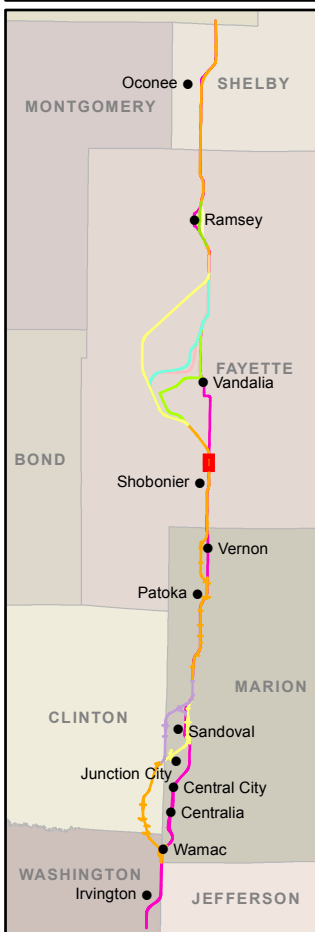


- Legend**
- Existing U.S. 51
 - U.S. 51 Build Alternative
 - CS Alt 1
 - CS Alt 2
 - V Alt 1
 - V Alt 2
 - V Alt 3
 - V Alt 4
 - Ramsey Creek Option A
 - Ramsey Creek Option B
 - R Alt 1
 - R Alt 2
 - Alternative Centerline
 - Alternative Right-of-Way
 - Biologically Significant Stream
 - Stream
 - Centennial Farm
 - Sesquicentennial Farm
 - State Park
 - INHS High Quality Wetland
 - INHS Wetland
 - INAI Site
 - Uneconomic Remnant
 - Important Use Area
 - REC Site
 - Floodplain
 - County Boundary
 - Municipality Boundary
 - Grade Separation
 - Noise Receptor
 - Monitored Noise Receptor
 - Quarry
 - CERCLIS Site
 - National Register Historic Site
 - Access Closures
 - Public Facility
 - Major Employers
 - Displacements**
 - Residence
 - Residential Outbuilding
 - Farm Residence
 - Farm Outbuilding
 - Farm Business
 - Farm Business Outbuilding
 - Business
 - Access Impacts**
 - Residence
 - Residential Outbuilding
 - Farm Residence
 - Farm Outbuilding
 - Farm Business
 - Farm Business Outbuilding
 - Public Facility
- Sources:
 Illinois Department of Natural Resources, Illinois Natural History Survey, U.S. Geological Survey
 Data to be used for reference only



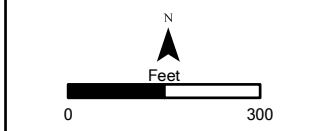
SHEET 54 OF 185

**ENVIRONMENTAL
RESOURCES**



- Legend**
- Existing U.S. 51
 - U.S. 51 Build Alternative
 - CS Alt 1
 - CS Alt 2
 - V Alt 1
 - V Alt 2
 - V Alt 3
 - V Alt 4
 - Ramsey Creek Option A
 - Ramsey Creek Option B
 - R Alt 1
 - R Alt 2
 - Alternative Centerline
 - Alternative Right-of-Way
 - Biologically Significant Stream
 - Stream
 - Centennial Farm
 - Sesquicentennial Farm
 - State Park
 - INHS High Quality Wetland
 - INHS Wetland
 - INAI Site
 - Uneconomic Remnant
 - Important Use Area
 - REC Site
 - Floodplain
 - County Boundary
 - Municipality Boundary
 - Grade Separation
 - Noise Receptor
 - Monitored Noise Receptor
 - Quarry
 - CERCLIS Site
 - National Register Historic Site
 - Access Closures
 - Public Facility
 - Major Employers
 - Displacements**
 - Residence
 - Residential Outbuilding
 - Farm Residence
 - Farm Outbuilding
 - Farm Business
 - Farm Business Outbuilding
 - Business
 - Access Impacts**
 - Residence
 - Residential Outbuilding
 - Farm Residence
 - Farm Outbuilding
 - Farm Business
 - Farm Business Outbuilding
 - Public Facility

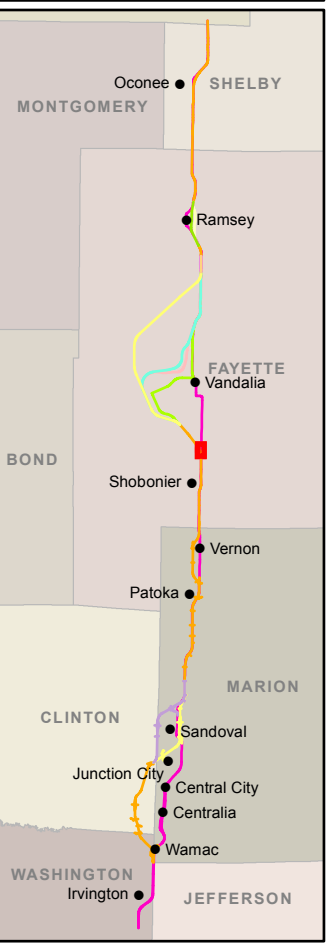
Sources:
 Illinois Department of Natural Resources, Illinois
 Natural History Survey, U.S. Geological Survey
 Data to be used for reference only



SHEET 55 OF 185
**ENVIRONMENTAL
 RESOURCES**



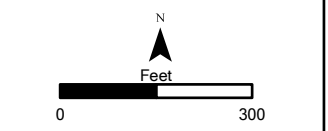
Aerial Background Copyright: © 2012 Esri, DeLorme, NAVTEQ, TomTom
 Source: Esri, DigitalGlobe, GeoEye, i-cubed, USDA, USGS, AEX, Getmapping, Aerogrid, IGN, IGP, swisstopo, and the GIS User Community



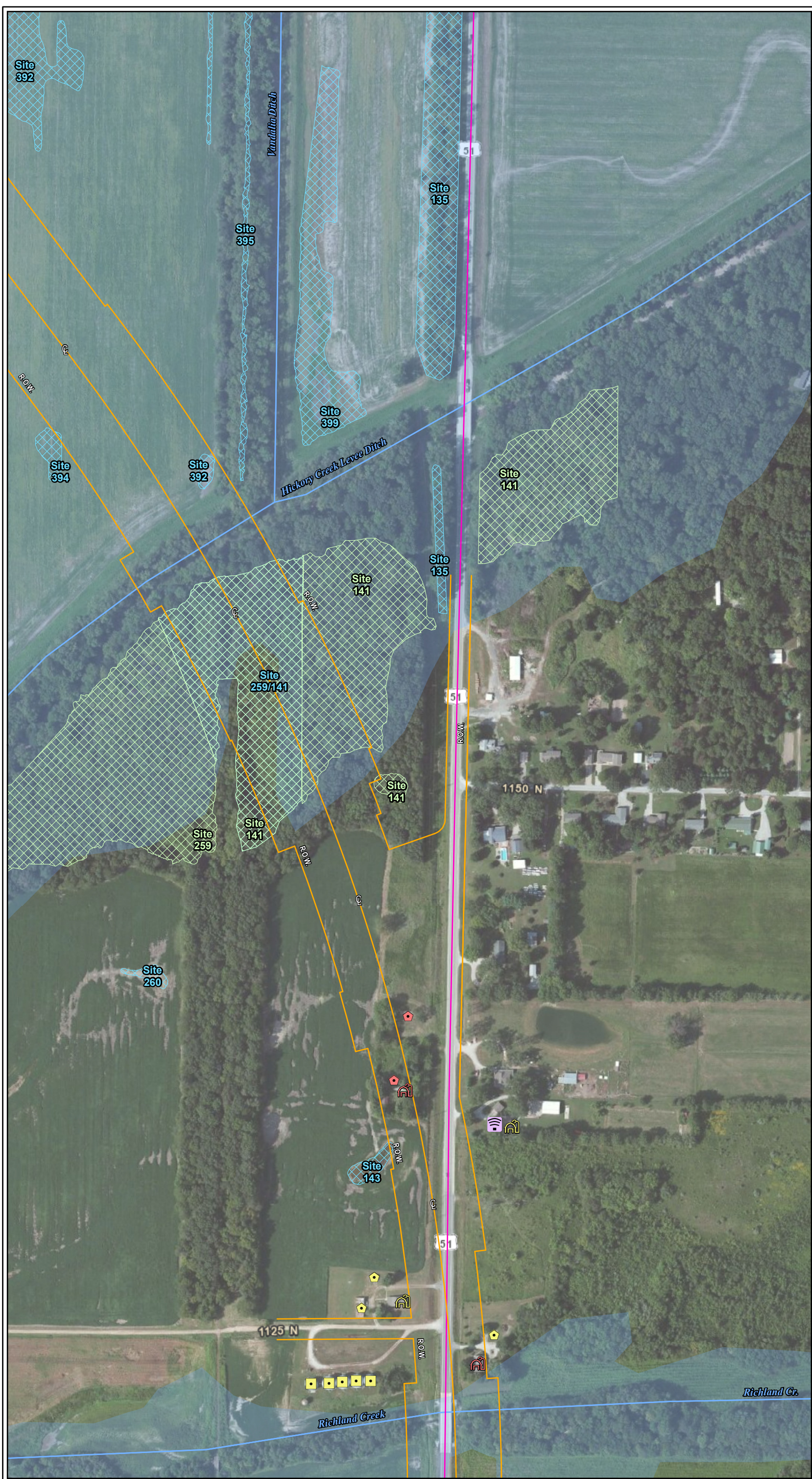
Legend

- Existing U.S. 51
- U.S. 51 Build Alternative
- CS Alt 1
- CS Alt 2
- V Alt 1
- V Alt 2
- V Alt 3
- V Alt 4
- Ramsey Creek Option A
- Ramsey Creek Option B
- R Alt 1
- R Alt 2
- Alternative Centerline
- Alternative Right-of-Way
- Biologically Significant Stream
- Stream
- Centennial Farm
- Sesquicentennial Farm
- State Park
- INHS High Quality Wetland
- INHS Wetland
- INAI Site
- Uneconomic Remnant
- Important Use Area
- REC Site
- Floodplain
- County Boundary
- Municipality Boundary
- Grade Separations
- Noise Receptor
- Monitored Noise Receptor
- Quarry
- CERCLIS Site
- National Register Historic Site
- Access Closures
- Public Facility
- Major Employers
- Displacements**
- Residence
- Residential Outbuilding
- Farm Residence
- Farm Outbuilding
- Farm Business
- Farm Business Outbuilding
- Business
- Access Impacts**
- Residence
- Residential Outbuilding
- Farm Residence
- Farm Outbuilding
- Farm Business
- Farm Business Outbuilding
- Public Facility

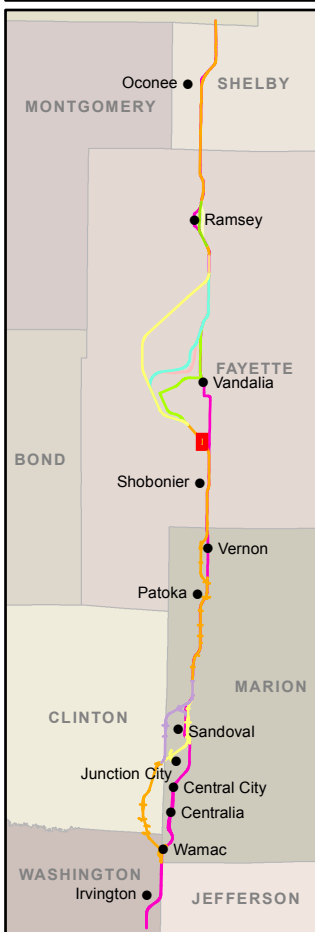
Sources:
 Illinois Department of Natural Resources, Illinois Natural History Survey, U.S. Geological Survey
 Data to be used for reference only



SHEET 56 OF 185
ENVIRONMENTAL RESOURCES

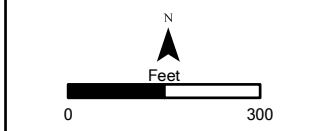


Aerial Background Copyright: © 2012 Esri, DeLorme, NAVTEQ, TomTom
 Source: Esri, DigitalGlobe, GeoEye, i-cubed, USDA, USGS, AEX, Getmapping, Aerogrid, IGN, IGP, swisstopo, and the GIS User Community

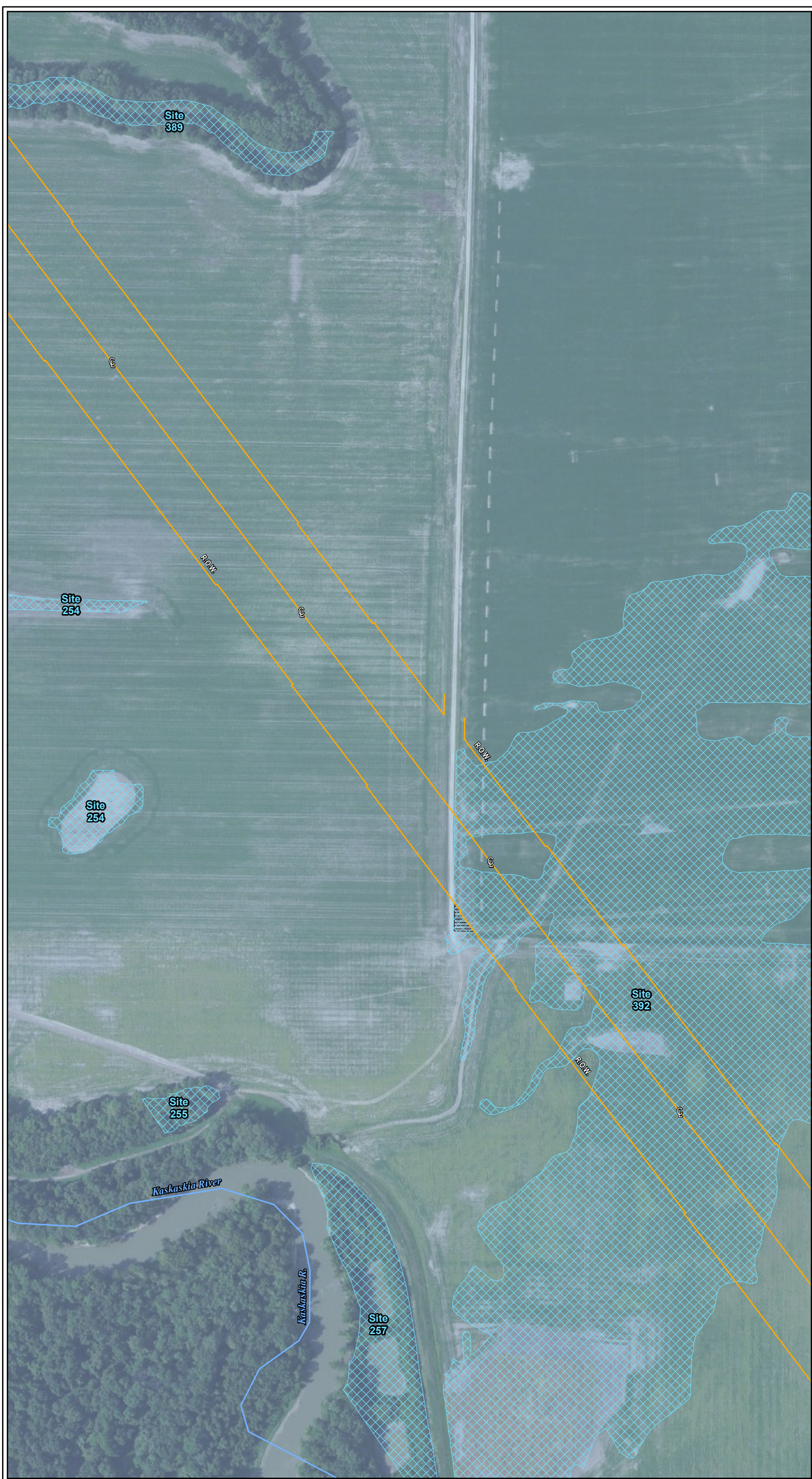


- Legend**
- Existing U.S. 51
 - U.S. 51 Build Alternative
 - CS Alt 1
 - CS Alt 2
 - V Alt 1
 - V Alt 2
 - V Alt 3
 - V Alt 4
 - Ramsey Creek Option A
 - Ramsey Creek Option B
 - R Alt 1
 - R Alt 2
 - Alternative Centerline
 - Alternative Right-of-Way
 - Biologically Significant Stream
 - Stream
 - Centennial Farm
 - Sesquicentennial Farm
 - State Park
 - INHS High Quality Wetland
 - INHS Wetland
 - INAI Site
 - Uneconomic Remnant
 - Important Use Area
 - REC Site
 - Floodplain
 - County Boundary
 - Municipality Boundary
 - Grade Separation
 - Noise Receptor
 - Monitored Noise Receptor
 - Quarry
 - CERCLIS Site
 - National Register Historic Site
 - Access Closures
 - Public Facility
 - Major Employers
 - Displacements**
 - Residence
 - Residential Outbuilding
 - Farm Residence
 - Farm Outbuilding
 - Farm Business
 - Farm Business Outbuilding
 - Business
 - Access Impacts**
 - Residence
 - Residential Outbuilding
 - Farm Residence
 - Farm Outbuilding
 - Farm Business
 - Farm Business Outbuilding
 - Public Facility

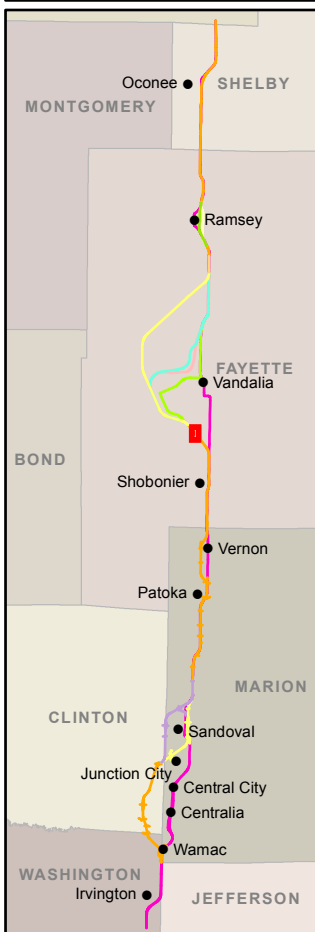
Sources:
 Illinois Department of Natural Resources, Illinois
 Natural History Survey, U.S. Geological Survey
 Data to be used for reference only



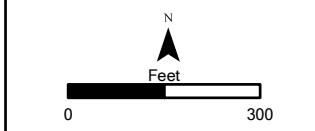
SHEET 57 OF 185
**ENVIRONMENTAL
 RESOURCES**



Aerial Background Copyright: © 2012 Esri, DeLorme, NAVTEQ, TomTom
 Source: Esri, DigitalGlobe, GeoEye, i-cubed, USDA, USGS, AEX, Getmapping, Aerogrid, IGN, IGP, swisstopo, and the GIS User Community



- Legend**
- Existing U.S. 51
 - U.S. 51 Build Alternative
 - CS Alt 1
 - CS Alt 2
 - V Alt 1
 - V Alt 2
 - V Alt 3
 - V Alt 4
 - Ramsey Creek Option A
 - Ramsey Creek Option B
 - R Alt 1
 - R Alt 2
 - Alternative Centerline
 - Alternative Right-of-Way
 - Biologically Significant Stream
 - Stream
 - Centennial Farm
 - Sesquicentennial Farm
 - State Park
 - INHS High Quality Wetland
 - INHS Wetland
 - INAI Site
 - Uneconomic Remnant
 - Important Use Area
 - REC Site
 - Floodplain
 - County Boundary
 - Municipality Boundary
 - Grade Separation
 - Noise Receptor
 - Monitored Noise Receptor
 - Quarry
 - CERCLIS Site
 - National Register Historic Site
 - Access Closures
 - Public Facility
 - Major Employers
 - Displacements**
 - Residence
 - Residential Outbuilding
 - Farm Residence
 - Farm Outbuilding
 - Farm Business
 - Farm Business Outbuilding
 - Business
 - Access Impacts**
 - Residence
 - Residential Outbuilding
 - Farm Residence
 - Farm Outbuilding
 - Farm Business
 - Farm Business Outbuilding
 - Public Facility
- Sources:
 Illinois Department of Natural Resources, Illinois Natural History Survey, U.S. Geological Survey
 Data to be used for reference only



SHEET 58 OF 185
ENVIRONMENTAL RESOURCES



Aerial Background Copyright: © 2012 Esri, DeLorme, NAVTEQ, TomTom
 Source: Esri, DigitalGlobe, GeoEye, i-cubed, USDA, USGS, AEX, Getmapping, Aerogrid, IGN, IGP, swisstopo, and the GIS User Community