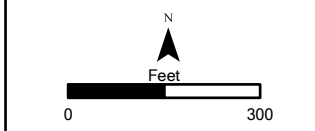


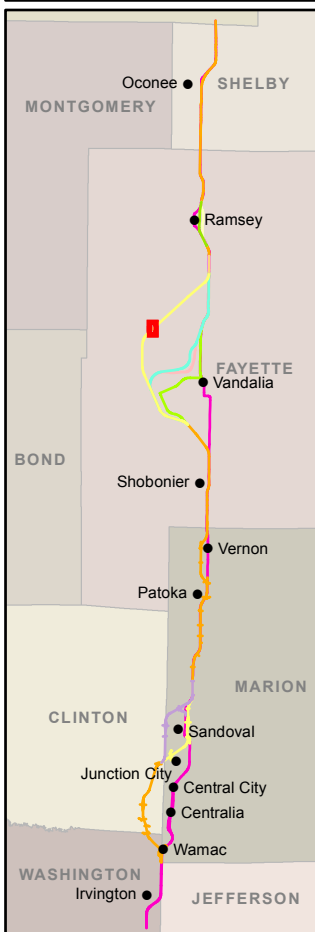
- Legend**
- Existing U.S. 51
  - U.S. 51 Build Alternative
  - CS Alt 1
  - CS Alt 2
  - V Alt 1
  - V Alt 2
  - V Alt 3
  - V Alt 4
  - Ramsey Creek Option A
  - Ramsey Creek Option B
  - R Alt 1
  - R Alt 2
  - Alternative Centerline
  - Alternative Right-of-Way
  - Biologically Significant Stream
  - Stream
  - Centennial Farm
  - Sesquicentennial Farm
  - State Park
  - INHS High Quality Wetland
  - INHS Wetland
  - INAI Site
  - Uneconomic Remnant
  - Important Use Area
  - REC Site
  - Floodplain
  - County Boundary
  - Municipality Boundary
  - Grade Separation
  - Noise Receptor
  - Monitored Noise Receptor
  - Quarry
  - CERCLIS Site
  - National Register Historic Site
  - Access Closures
  - Public Facility
  - Major Employers
  - Displacements**
  - Residence
  - Residential Outbuilding
  - Farm Residence
  - Farm Outbuilding
  - Farm Business
  - Farm Business Outbuilding
  - Business
  - Access Impacts**
  - Residence
  - Residential Outbuilding
  - Farm Residence
  - Farm Outbuilding
  - Farm Business
  - Farm Business Outbuilding
  - Public Facility
- Sources:  
 Illinois Department of Natural Resources, Illinois Natural History Survey, U.S. Geological Survey  
 Data to be used for reference only



SHEET 71 OF 185  
**ENVIRONMENTAL RESOURCES**

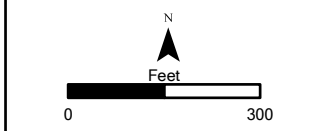






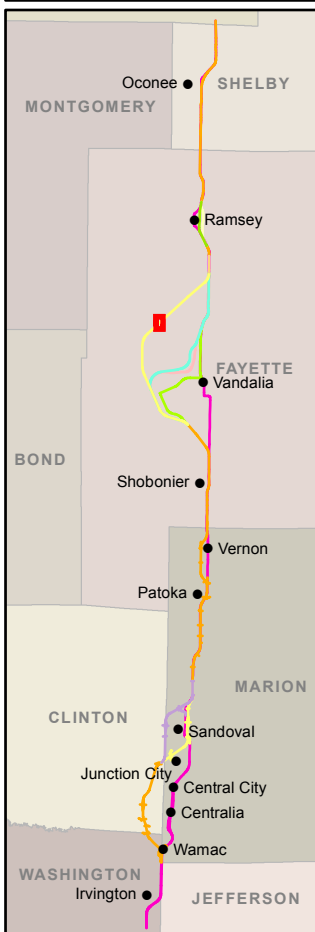
- Legend**
- Existing U.S. 51
  - U.S. 51 Build Alternative
  - CS Alt 1
  - CS Alt 2
  - V Alt 1
  - V Alt 2
  - V Alt 3
  - V Alt 4
  - Ramsey Creek Option A
  - Ramsey Creek Option B
  - R Alt 1
  - R Alt 2
  - Alternative Centerline
  - Alternative Right-of-Way
  - Biologically Significant Stream
  - Stream
  - Centennial Farm
  - Sesquicentennial Farm
  - State Park
  - INHS High Quality Wetland
  - INHS Wetland
  - INAI Site
  - Uneconomic Remnant
  - Important Use Area
  - REC Site
  - Floodplain
  - County Boundary
  - Municipality Boundary
  - Grade Separation
  - Noise Receptor
  - Monitored Noise Receptor
  - Quarry
  - CERCLIS Site
  - National Register Historic Site
  - Access Closures
  - Public Facility
  - Major Employers
  - Displacements**
  - Residence
  - Residential Outbuilding
  - Farm Residence
  - Farm Outbuilding
  - Farm Business
  - Farm Business Outbuilding
  - Business
  - Access Impacts**
  - Residence
  - Residential Outbuilding
  - Farm Residence
  - Farm Outbuilding
  - Farm Business
  - Farm Business Outbuilding
  - Public Facility

Sources:  
 Illinois Department of Natural Resources, Illinois  
 Natural History Survey, U.S. Geological Survey  
 Data to be used for reference only



SHEET 72 OF 185  
**ENVIRONMENTAL  
 RESOURCES**

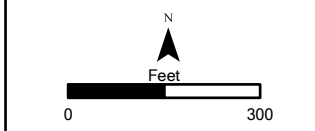




**Legend**

- Existing U.S. 51
- U.S. 51 Build Alternative
- CS Alt 1
- CS Alt 2
- V Alt 1
- V Alt 2
- V Alt 3
- V Alt 4
- Ramsey Creek Option A
- Ramsey Creek Option B
- R Alt 1
- R Alt 2
- Alternative Centerline
- Alternative Right-of-Way
- Biologically Significant Stream
- Stream
- Centennial Farm
- Sesquicentennial Farm
- State Park
- INHS High Quality Wetland
- INHS Wetland
- INAI Site
- Uneconomic Remnant
- Important Use Area
- REC Site
- Floodplain
- County Boundary
- Municipality Boundary
- Grade Separation
- Noise Receptor
- Monitored Noise Receptor
- Quarry
- CERCLIS Site
- National Register Historic Site
- Access Closures
- Public Facility
- Major Employers
- Displacements**
- Residence
- Residential Outbuilding
- Farm Residence
- Farm Outbuilding
- Farm Business
- Farm Business Outbuilding
- Business
- Access Impacts**
- Residence
- Residential Outbuilding
- Farm Residence
- Farm Outbuilding
- Farm Business
- Farm Business Outbuilding
- Public Facility

Sources:  
 Illinois Department of Natural Resources, Illinois Natural History Survey, U.S. Geological Survey  
 Data to be used for reference only

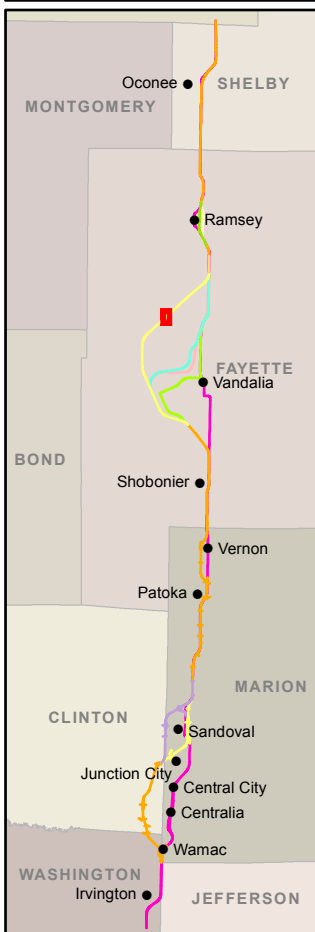


SHEET 73 OF 185  
**ENVIRONMENTAL RESOURCES**



Aerial Background Copyright: © 2012 Esri, DeLorme, NAVTEQ, TomTom  
 Source: Esri, DigitalGlobe, GeoEye, i-cubed, USDA, USGS, AEX, Getmapping, Aerogrid, IGN, IGP, swisstopo, and the GIS User Community





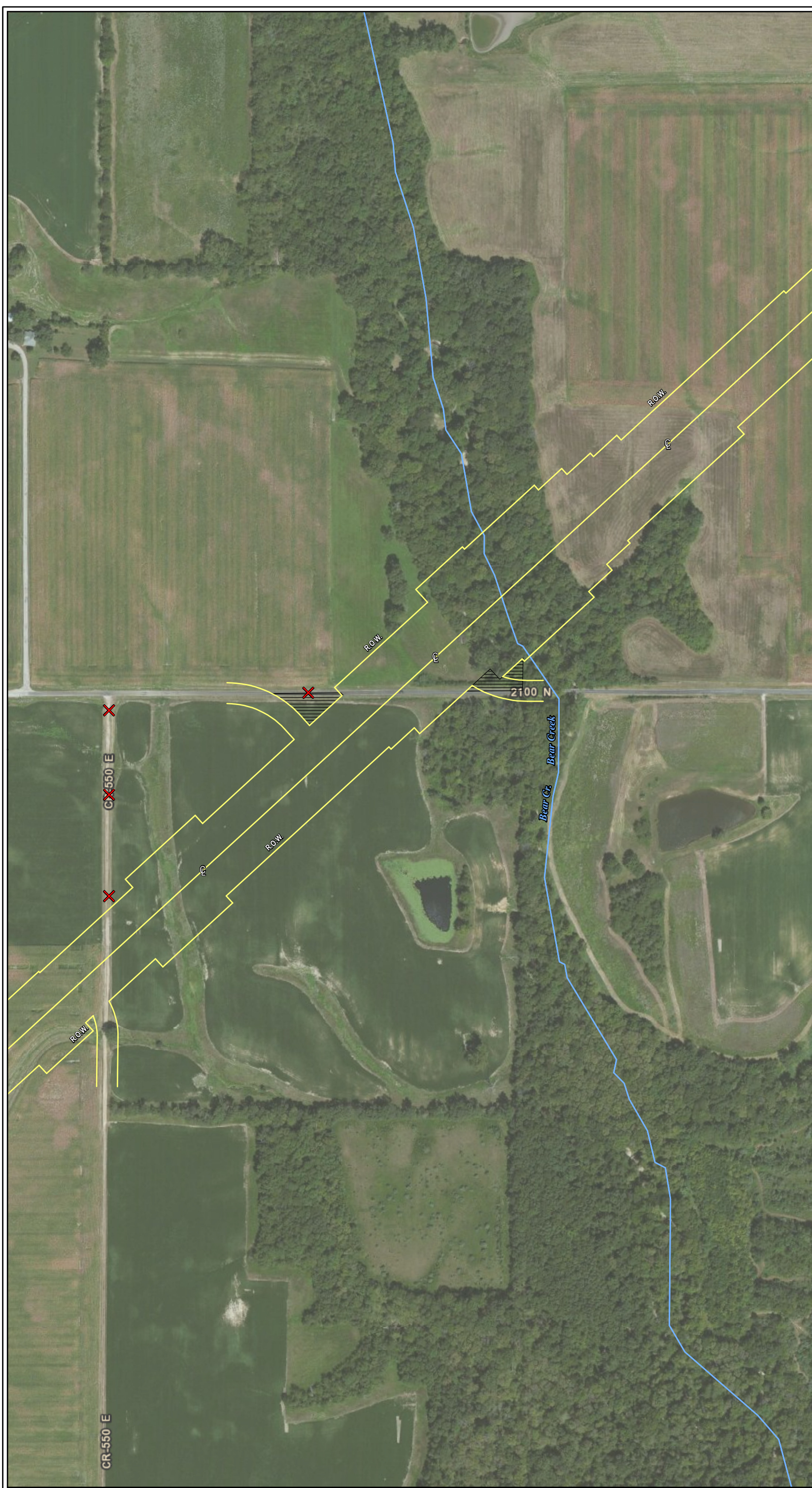
- Legend**
- Existing U.S. 51
  - U.S. 51 Build Alternative
  - CS Alt 1
  - CS Alt 2
  - V Alt 1
  - V Alt 2
  - V Alt 3
  - V Alt 4
  - Ramsey Creek Option A
  - Ramsey Creek Option B
  - R Alt 1
  - R Alt 2
  - Ⓢ Alternative Centerline
  - Alternative Right-of-Way
  - Biologically Significant Stream
  - Stream
  - Centennial Farm
  - Sesquicentennial Farm
  - State Park
  - INHS High Quality Wetland
  - INHS Wetland
  - INAI Site
  - Uneconomic Remnant
  - Important Use Area
  - REC Site
  - Floodplain
  - County Boundary
  - Municipality Boundary
  - Grade Separation
  - Ⓢ Noise Receptor
  - Ⓢ Monitored Noise Receptor
  - Ⓢ Quarry
  - Ⓢ CERCLIS Site
  - Ⓢ National Register Historic Site
  - ✕ Access Closures
  - Ⓢ Public Facility
  - Ⓢ Major Employers
  - Displacements**
  - Ⓢ Residence
  - Ⓢ Residential Outbuilding
  - Ⓢ Farm Residence
  - Ⓢ Farm Outbuilding
  - Ⓢ Farm Business
  - Ⓢ Farm Business Outbuilding
  - Ⓢ Business
  - Access Impacts**
  - Ⓢ Residence
  - Ⓢ Residential Outbuilding
  - Ⓢ Farm Residence
  - Ⓢ Farm Outbuilding
  - Ⓢ Farm Business
  - Ⓢ Farm Business Outbuilding
  - Ⓢ Public Facility

Sources:  
 Illinois Department of Natural Resources, Illinois Natural History Survey, U.S. Geological Survey  
 Data to be used for reference only



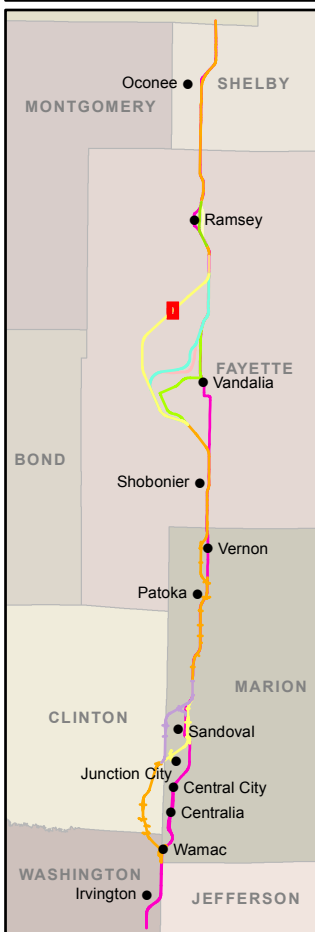
SHEET 74 OF 185

**ENVIRONMENTAL  
RESOURCES**



Aerial Background Copyright: © 2012 Esri, DeLorme, NAVTEQ, TomTom  
 Source: Esri, DigitalGlobe, GeoEye, I-cubed, USDA, USGS, AEX, Getmapping, Aerogrid, IGN, IGP, swisstopo, and the GIS User Community



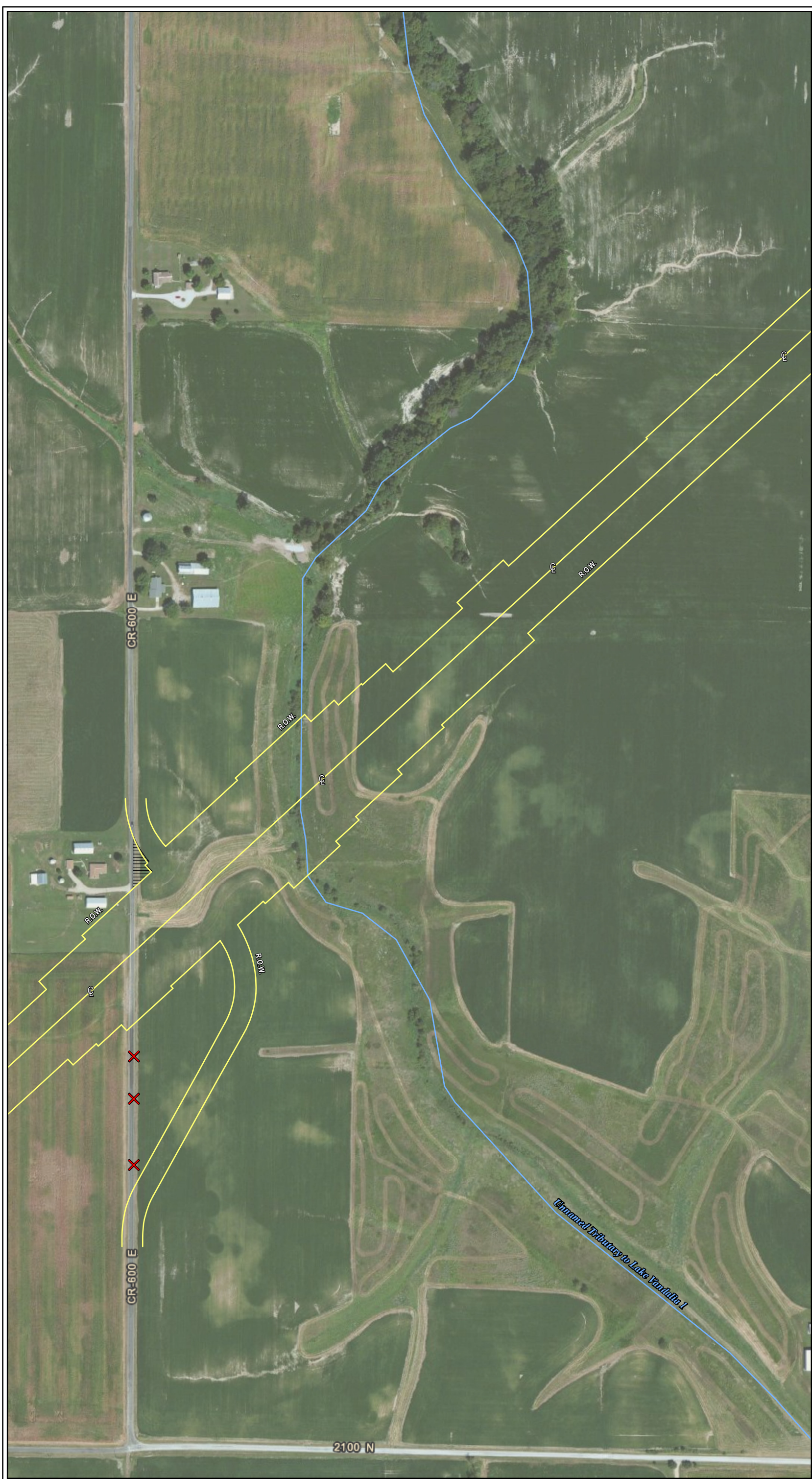


- Legend**
- Existing U.S. 51
  - U.S. 51 Build Alternative
  - CS Alt 1
  - CS Alt 2
  - V Alt 1
  - V Alt 2
  - V Alt 3
  - V Alt 4
  - Ramsey Creek Option A
  - Ramsey Creek Option B
  - R Alt 1
  - R Alt 2
  - Alternative Centerline
  - Alternative Right-of-Way
  - Biologically Significant Stream
  - Stream
  - Centennial Farm
  - Sesquicentennial Farm
  - State Park
  - INHS High Quality Wetland
  - INHS Wetland
  - INAI Site
  - Uneconomic Remnant
  - Important Use Area
  - REC Site
  - Floodplain
  - County Boundary
  - Municipality Boundary
  - Grade Separation
  - Noise Receptor
  - Monitored Noise Receptor
  - Quarry
  - CERCLIS Site
  - National Register Historic Site
  - Access Closures
  - Public Facility
  - Major Employers
  - Displacements**
  - Residence
  - Residential Outbuilding
  - Farm Residence
  - Farm Outbuilding
  - Farm Business
  - Farm Business Outbuilding
  - Business
  - Access Impacts**
  - Residence
  - Residential Outbuilding
  - Farm Residence
  - Farm Outbuilding
  - Farm Business
  - Farm Business Outbuilding
  - Public Facility

Sources:  
 Illinois Department of Natural Resources, Illinois  
 Natural History Survey, U.S. Geological Survey  
 Data to be used for reference only



SHEET 75 OF 185  
**ENVIRONMENTAL  
 RESOURCES**

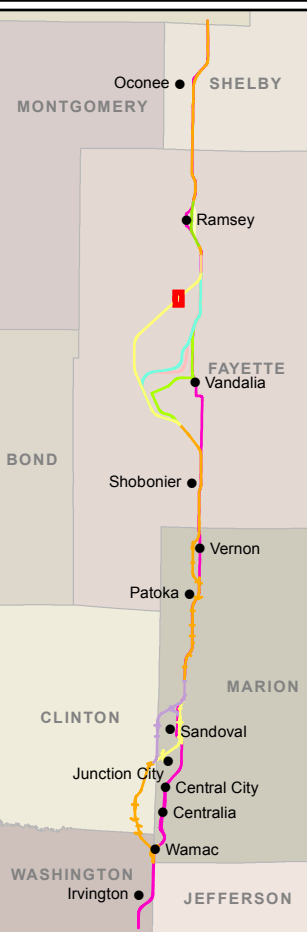


Aerial Background Copyright: © 2012 Esri, DeLorme, NAVTEQ, TomTom  
 Source: Esri, DigitalGlobe, GeoEye, i-cubed, USDA, USGS, AEX, Getmapping, Aerogrid, IGN, IGP, swisstopo, and the GIS User Community



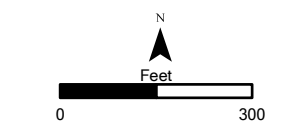




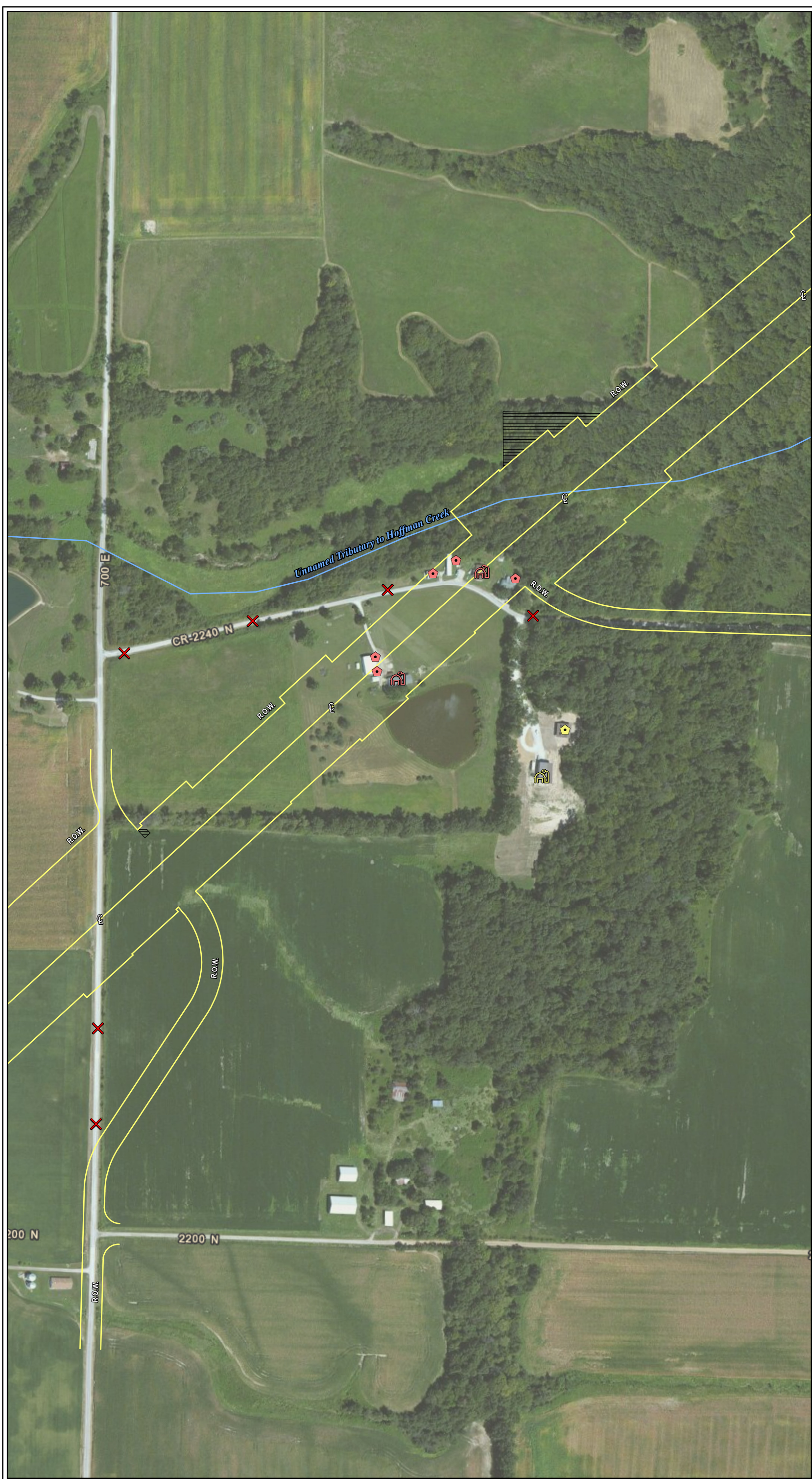


- Legend**
- Existing U.S. 51
  - U.S. 51 Build Alternative
  - CS Alt 1
  - CS Alt 2
  - V Alt 1
  - V Alt 2
  - V Alt 3
  - V Alt 4
  - Ramsey Creek Option A
  - Ramsey Creek Option B
  - R Alt 1
  - R Alt 2
  - Alternative Centerline
  - Alternative Right-of-Way
  - Biologically Significant Stream
  - Stream
  - Centennial Farm
  - Sesquicentennial Farm
  - State Park
  - INHS High Quality Wetland
  - INHS Wetland
  - INAI Site
  - Uneconomic Remnant
  - Important Use Area
  - REC Site
  - Floodplain
  - County Boundary
  - Municipality Boundary
  - Grade Separation
  - Noise Receptor
  - Monitored Noise Receptor
  - Quarry
  - CERCLIS Site
  - National Register Historic Site
  - Access Closures
  - Public Facility
  - Major Employers
  - Displacements**
  - Residence
  - Residential Outbuilding
  - Farm Residence
  - Farm Outbuilding
  - Farm Business
  - Farm Business Outbuilding
  - Business
  - Access Impacts**
  - Residence
  - Residential Outbuilding
  - Farm Residence
  - Farm Outbuilding
  - Farm Business
  - Farm Business Outbuilding
  - Public Facility

Sources:  
 Illinois Department of Natural Resources, Illinois  
 Natural History Survey, U.S. Geological Survey  
 Data to be used for reference only

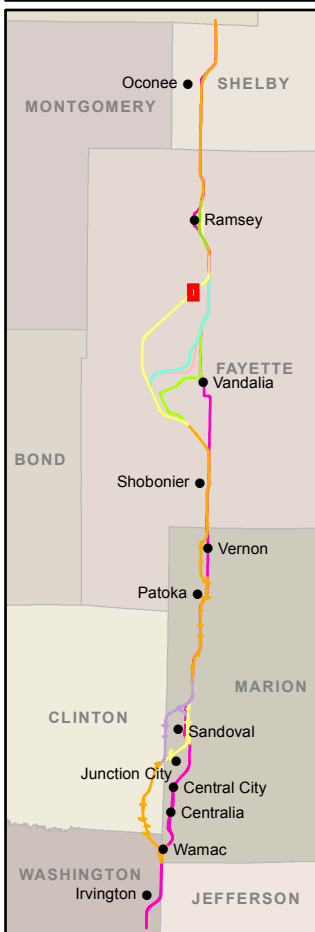


SHEET 77 OF 185  
**ENVIRONMENTAL  
 RESOURCES**



Aerial Background Copyright: © 2012 Esri, DeLorme, NAVTEQ, TomTom  
 Source: Esri, DigitalGlobe, GeoEye, i-cubed, USDA, USGS, AEX, Getmapping, Aerogrid, IGN, IGP, swisstopo, and the GIS User Community





- Legend**
- Existing U.S. 51
  - U.S. 51 Build Alternative
  - CS Alt 1
  - CS Alt 2
  - V Alt 1
  - V Alt 2
  - V Alt 3
  - V Alt 4
  - Ramsey Creek Option A
  - Ramsey Creek Option B
  - R Alt 1
  - R Alt 2
  - Alternative Centerline
  - Alternative Right-of-Way
  - Biologically Significant Stream
  - Stream
  - Centennial Farm
  - Sesquicentennial Farm
  - State Park
  - INHS High Quality Wetland
  - INHS Wetland
  - INAI Site
  - Uneconomic Remnant
  - Important Use Area
  - REC Site
  - Floodplain
  - County Boundary
  - Municipality Boundary
  - Grade Separation
  - Noise Receptor
  - Monitored Noise Receptor
  - Quarry
  - CERCLIS Site
  - National Register Historic Site
  - Access Closures
  - Public Facility
  - Major Employers
  - Displacements**
  - Residence
  - Residential Outbuilding
  - Farm Residence
  - Farm Outbuilding
  - Farm Business
  - Farm Business Outbuilding
  - Business
  - Access Impacts**
  - Residence
  - Residential Outbuilding
  - Farm Residence
  - Farm Outbuilding
  - Farm Business
  - Farm Business Outbuilding
  - Public Facility

Sources:  
 Illinois Department of Natural Resources, Illinois  
 Natural History Survey, U.S. Geological Survey  
 Data to be used for reference only

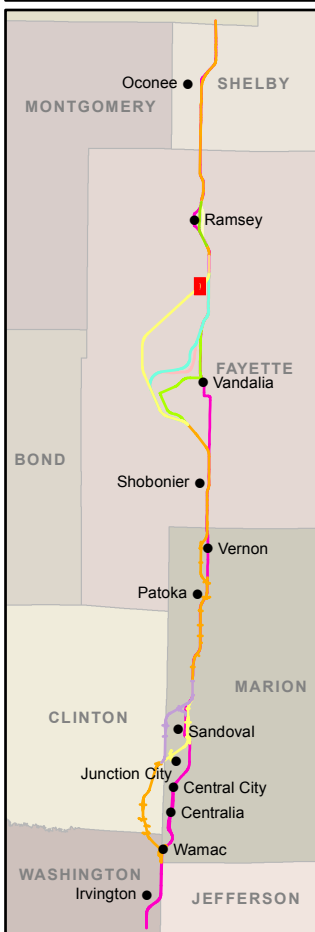


SHEET 78 OF 185  
**ENVIRONMENTAL  
 RESOURCES**



Aerial Background Copyright: © 2012 Esri, DeLorme, NAVTEQ, TomTom  
 Source: Esri, DigitalGlobe, GeoEye, i-cubed, USDA, USGS, AEX, Getmapping, Aerogrid, IGN, IGP, swisstopo, and the GIS User Community





- Legend**
- Existing U.S. 51
  - U.S. 51 Build Alternative
  - CS Alt 1
  - CS Alt 2
  - V Alt 1
  - V Alt 2
  - V Alt 3
  - V Alt 4
  - Ramsey Creek Option A
  - Ramsey Creek Option B
  - R Alt 1
  - R Alt 2
  - Alternative Centerline
  - Alternative Right-of-Way
  - Biologically Significant Stream
  - Stream
  - Centennial Farm
  - Sesquicentennial Farm
  - State Park
  - INHS High Quality Wetland
  - INHS Wetland
  - INAI Site
  - Uneconomic Remnant
  - Important Use Area
  - REC Site
  - Floodplain
  - County Boundary
  - Municipality Boundary
  - Grade Separation
  - Noise Receptor
  - Monitored Noise Receptor
  - Quarry
  - CERCLIS Site
  - National Register Historic Site
  - Access Closures
  - Public Facility
  - Major Employers
  - Displacements**
  - Residence
  - Residential Outbuilding
  - Farm Residence
  - Farm Outbuilding
  - Farm Business
  - Farm Business Outbuilding
  - Business
  - Access Impacts**
  - Residence
  - Residential Outbuilding
  - Farm Residence
  - Farm Outbuilding
  - Farm Business
  - Farm Business Outbuilding
  - Public Facility

Sources:  
 Illinois Department of Natural Resources, Illinois  
 Natural History Survey, U.S. Geological Survey  
 Data to be used for reference only

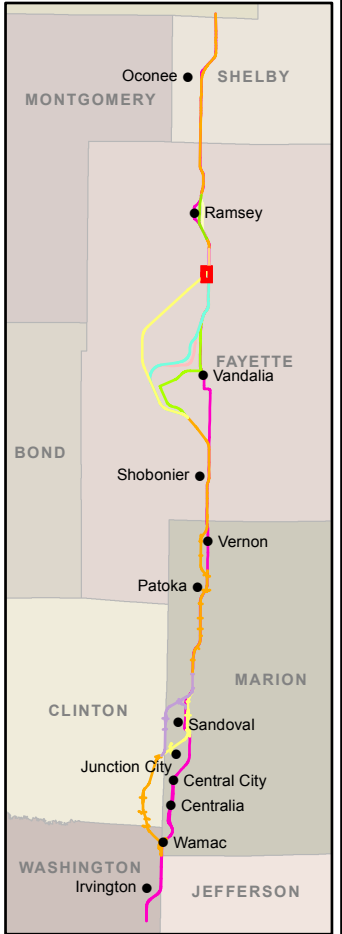
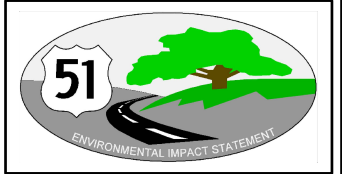


SHEET 79 OF 185  
**ENVIRONMENTAL  
 RESOURCES**



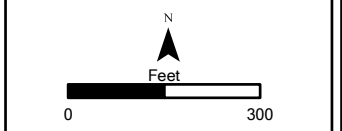
Aerial Background Copyright: © 2012 Esri, DeLorme, NAVTEQ, TomTom  
 Source: Esri, DigitalGlobe, GeoEye, i-cubed, USDA, USGS, AEX, Getmapping, Aerogrid, IGN, IGP, swisstopo, and the GIS User Community





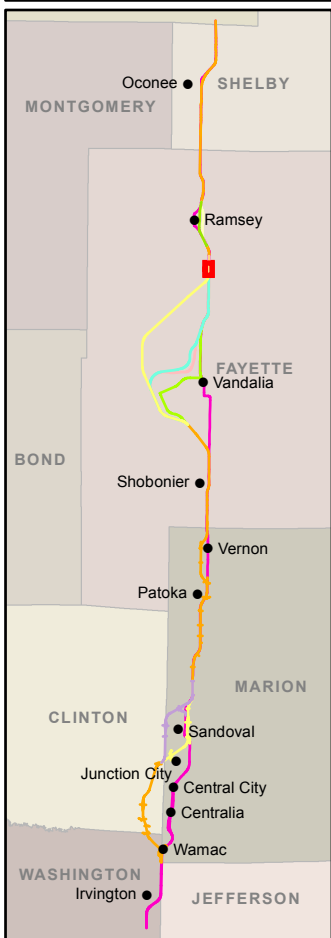
- Legend**
- Existing U.S. 51
  - U.S. 51 Build Alternative
  - CS Alt 1
  - CS Alt 2
  - V Alt 1
  - V Alt 2
  - V Alt 3
  - V Alt 4
  - Ramsey Creek Option A
  - Ramsey Creek Option B
  - R Alt 1
  - R Alt 2
  - Alternative Centerline
  - Alternative Right-of-Way
  - Biologically Significant Stream
  - Stream
  - Centennial Farm
  - Sesquicentennial Farm
  - State Park
  - INHS High Quality Wetland
  - INHS Wetland
  - INAI Site
  - Uneconomic Remnant
  - Important Use Area
  - REC Site
  - Floodplain
  - County Boundary
  - Municipality Boundary
  - Grade Separation
  - Noise Receptor
  - Monitored Noise Receptor
  - Quarry
  - CERCLIS Site
  - National Register Historic Site
  - Access Closures
  - Public Facility
  - Major Employers
  - Displacements**
  - Residence
  - Residential Outbuilding
  - Farm Residence
  - Farm Outbuilding
  - Farm Business
  - Farm Business Outbuilding
  - Business
  - Access Impacts**
  - Residence
  - Residential Outbuilding
  - Farm Residence
  - Farm Outbuilding
  - Farm Business
  - Farm Business Outbuilding
  - Public Facility

Sources:  
 Illinois Department of Natural Resources, Illinois  
 Natural History Survey, U.S. Geological Survey  
 Data to be used for reference only



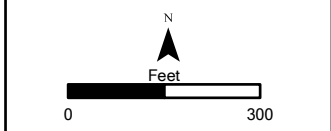
Aerial Background Copyright: © 2012 Esri, DeLorme, NAVTEQ, TomTom  
 Source: Esri, DigitalGlobe, GeoEye, i-cubed, USDA, USGS, AEX, Getmapping, Aerogrid, IGN, IGP, swisstopo, and the GIS User Community





- Legend**
- Existing U.S. 51
  - U.S. 51 Build Alternative
  - CS Alt 1
  - CS Alt 2
  - V Alt 1
  - V Alt 2
  - V Alt 3
  - V Alt 4
  - Ramsay Creek Option A
  - Ramsay Creek Option B
  - R Alt 1
  - R Alt 2
  - Alternative Centerline
  - Alternative Right-of-Way
  - Biologically Significant Stream
  - Stream
  - Centennial Farm
  - Sesquicentennial Farm
  - State Park
  - INHS High Quality Wetland
  - INHS Wetland
  - INAI Site
  - Uneconomic Remnant
  - Important Use Area
  - REC Site
  - Floodplain
  - County Boundary
  - Municipality Boundary
  - Grade Separation
  - Noise Receptor
  - Monitored Noise Receptor
  - Quarry
  - CERCLIS Site
  - National Register Historic Site
  - Access Closures
  - Public Facility
  - Major Employers
  - Displacements**
  - Residence
  - Residential Outbuilding
  - Farm Residence
  - Farm Outbuilding
  - Farm Business
  - Farm Business Outbuilding
  - Business
  - Access Impacts**
  - Residence
  - Residential Outbuilding
  - Farm Residence
  - Farm Outbuilding
  - Farm Business
  - Farm Business Outbuilding
  - Public Facility

Sources:  
 Illinois Department of Natural Resources, Illinois Natural History Survey, U.S. Geological Survey  
 Data to be used for reference only



Aerial Background Copyright: © 2012 Esri, DeLorme, NAVTEQ, TomTom  
 Source: Esri, DigitalGlobe, GeoEye, i-cubed, USDA, USGS, AEX, Getmapping, Aerogrid, IGN, IGP, swisstopo, and the GIS User Community